



# **Tsunami Deployer**

## **Oracle WebCenter**

## **Interaction Exporter Guide**

Supports extraction of Oracle WebCenter Interaction components and migrate to Microsoft SharePoint using Tsunami Deployer

Version 4.0  
Last Updated: March 31, 2024

# Table of Content

---

|   |             |
|---|-------------|
| <b>PREFACE .....</b>  | <b>IV</b>   |
| INTENDED AUDIENCE.....  | IV          |
| CONVENTIONS .....   | IV          |
| TECHNICAL SUPPORT.....  | V           |
| COMMENTS AND SUGGESTIONS .....  | V           |
| <b>1   INSTALLING TZUNAMI ORACLE WEBCENTER INTERACTION EXPORTER .....</b> | <b>1-1</b>  |
| 1.1   SYSTEM REQUIREMENTS .....   | 1-2         |
| 1.2   INSTALLING TZUNAMI ORACLE WCI EXPORTER .....                        | 1-3         |
| 1.3   CONFIGURATION OF TZUNAMI SERVICE SETTINGS .....                     | 1-6         |
| 1.4   POST INSTALLATION STEPS .....                                       | 1-6         |
| 1.5   UNINSTALL TZUNAMI ORACLE WCI EXPORTER.....                          | 1-9         |
| 1.5.1   Uninstallation using Installer .....                              | 1-9         |
| 1.5.2   Uninstallation using Control Panel.....                           | 1-10        |
| <b>2   TZUNAMI ORACLE WEBCENTER INTERACTION EXPORTER.....</b>             | <b>2-11</b> |
| 2.1   OVERVIEW .....  | 2-12        |
| 2.1.1   Supported Types .....   | 2-12        |
| 2.1.2   Security .....  | 2-13        |
| 2.2   EXPORTING FROM ORACLE WCI .....                                     | 2-14        |
| 2.3   COMMAND-LINE EXPORT.....  | 2-24        |
| 2.4   LOGGING SETTINGS.....   | 2-26        |
| 2.5   BEST PRACTICES.....   | 2-26        |
| <b>3   APPENDICES.....</b>  | <b>3-28</b> |
| 3.1   APPENDIX A – ORACLE WebCenter INTERACTION WITH SQL .....            | 3-28        |
| 3.2   APPENDIX B – ORACLE WebCenter INTERACTION WITH ORACLE .....         | 3-30        |
| <b>4   COPYRIGHT AND TRADEMARK .....</b>                                  | <b>4-32</b> |

# List of Tables

---

|  |      |
|--|------|
| Table 1-1: System Requirements .....   | 1-2  |
| Table 2-1: Oracle WCI Configurations, Projects Tab – Description of Fields .....     | 2-15 |
| Table 2-2: Oracle WCI Configurations, Directory Tab – Description of Fields .....    | 2-16 |
| Table 2-3: Oracle WCI v6.x Configurations, Database Tab – Description of Fields..... | 2-17 |
| Table 2-4: Oracle WCI Configurations, Actions Tab - Description of fields.....       | 2-18 |
| Table 2-5 Analyzer Information Description .....                                     | 2-20 |
| Table 2-6: Target Structure Guidelines .....   | 2-26 |

# List of Figures

---

|  |      |
|--|------|
| Figure 1-1: Welcome Window .....                                       | 1-3  |
| Figure 1-2: End-User License Agreement Window .....                    | 1-3  |
| Figure 1-3: Custom Setup Window .....                                  | 1-4  |
| Figure 1-4: Installing Tsunami Confluence Exporter Window .....        | 1-4  |
| Figure 1-5: Installation Complete Window .....                         | 1-5  |
| Figure 1-6 Deployer Settings Manager .....                             | 1-6  |
| Figure 2-1: Oracle WCI Configurations Screen – Projects Tab .....      | 2-15 |
| Figure 2-2: Oracle WCI Configurations Screen – Directory Tab .....     | 2-16 |
| Figure 2-3: Oracle WCI v6.x Configurations Screen – Database Tab ..... | 2-17 |
| Figure 2-4: Oracle WCI Configurations Screen – Actions Tab .....       | 2-18 |
| Figure 2-5: Connection Screen.....                                     | 2-19 |
| Figure 2-6 Analyze Option.....   | 2-20 |
| Figure 2-7 Analyzer Information .....                                  | 2-20 |
| Figure 2-8: Folder Selection Screen .....                              | 2-21 |
| Figure 2-9: Filter Screen .....  | 2-21 |
| Figure 2-10: Destination Folder Screen .....                           | 2-22 |
| Figure 2-11: Exporter Progress Screen.....                             | 2-23 |
| Figure 2-12 Log level Settings .....                                   | 2-26 |

# PREFACE

This guide provides installation procedures for Tsunami Oracle WCI Exporter and detail steps to extract contents from Oracle WebCenter using Tsunami Oracle WCI Exporter. The guide also describes how to extract contents non-interactive way using command-line instructions and best practice.

This preface contains the following topics.

- Intended Audience
- Conventions
- Technical Support
- Comments and Suggestions

## INTENDED AUDIENCE

Tsunami Oracle WCI Exporter Guide is intended for:

- System Administrators who are responsible for exporting Oracle WCI contents and setting migration environment using Tsunami Deployer.
- Project Managers and IT Managers who create and regulate usage of Tsunami Deployer and Tsunami Oracle WCI Exporter.

## CONVENTIONS

The following text conventions are used in this document:

- Commands and keywords are given in **boldface**
- Terminal sessions, console screens, or system file names are displayed in `fixed width fonts`



**Caution** indicates that the described action might result in program malfunction or data loss.



**Notes** contain helpful suggestions about or references to materials not contained in this manual.



**Tips** provide information that might help you solve a problem.

## TECHNICAL SUPPORT

Before contacting Tzunami Support team, ensure that you are referencing the latest copy of this user guide (Ctrl+Click to follow link) [Tzunami Deployer Oracle WebCenter Interaction Exporter Guide](#).

For additional information, please contact Tzunami Support Team at [support@tzunami.com](mailto:support@tzunami.com)

## COMMENTS AND SUGGESTIONS

Your feedback is important to us and will help us to provide the most accurate and high quality information possible in our documentation. Send us comments or suggestions by email to [support@tzunami.com](mailto:support@tzunami.com). Be sure to include as much of the following as possible:

- The document title.
- The location that the document was accessed from (either downloaded from Tzunami web site or the Tzunami Deployer User Guide and Tzunami Oracle WCI Exporter Guide available in Tzunami Deployer).
- The section or chapter number and the original text found in the document.



When you send information to Tzunami Deployer, you grant Tzunami a non-exclusive right to use or distribute the information in any way it believes appropriate without incurring any obligation to you.

# 1 INSTALLING TZUNAMI ORACLE WEBCENTER INTERACTION EXPORTER

This chapter contains information about installing Tzunami Oracle WCI Exporter. It contains the following topics:

- *System Requirements*
- *Installing Tzunami Oracle WCI Exporter*
- *Uninstall Tzunami Oracle WCI Exporter*

## 1.1 SYSTEM REQUIREMENTS

The following table lists the system requirements for Tsunami Oracle WCI Exporter.

**Table 1-1: System Requirements**

| <b>Components</b>                 | <b>Minimum Requirements</b>  |
|-----------------------------------|--|
| <b>Computer and processor</b>     | 2GHz Pentium processor or equivalent   |
| <b>Memory</b>                     | 3 GB (Minimum)   |
| <b>Hard disk</b>                  | 50Mb (additional space will be required for the Tsunami Deployer projects, which may vary from 10 Mb to 4 GB). |
| <b>Supported Operating System</b> | Windows Server 2000/2003/2008/2012.  |
| <b>Network</b>                    | Intranet/Internet access depending on connectivity requirements  |
| <b>Display</b>                    | 800 x 600, 256 colors (minimum); 1024 x 768 high color, 32-bit (recommended)                                   |
| <b>Microsoft .NET Framework</b>   | Microsoft .NET Framework 2.0   |
| <b>Additional Requirements</b>    | Oracle WebCenter Interaction configured and running  |

## 1.2 INSTALLING TZUNAMI ORACLE WCI EXPORTER

You must install Tzunami Oracle WCI Exporter on the Oracle WCI Server.

To install Tzunami Oracle WebCenter Interaction Exporter:

1. Unzip the zip file, and run `TsunamiOracleWCIExporter.msi`. The Tzunami Oracle WCI Exporter Setup Wizard will launch. To advance through the install wizard, click **Next** on the bottom of the window.

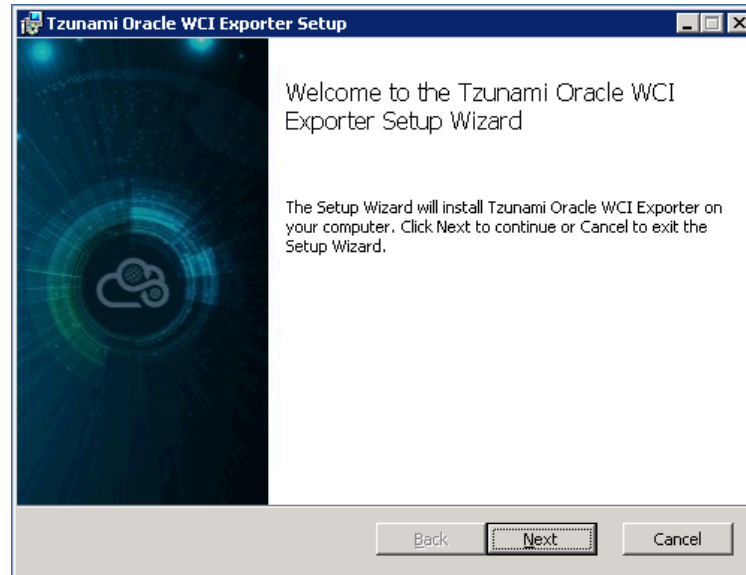


Figure 1-1: Welcome Window

2. In the End-User Licensing Agreement panel, click **"I accept the terms in the License Agreement"** and click **Next** to continue installation.

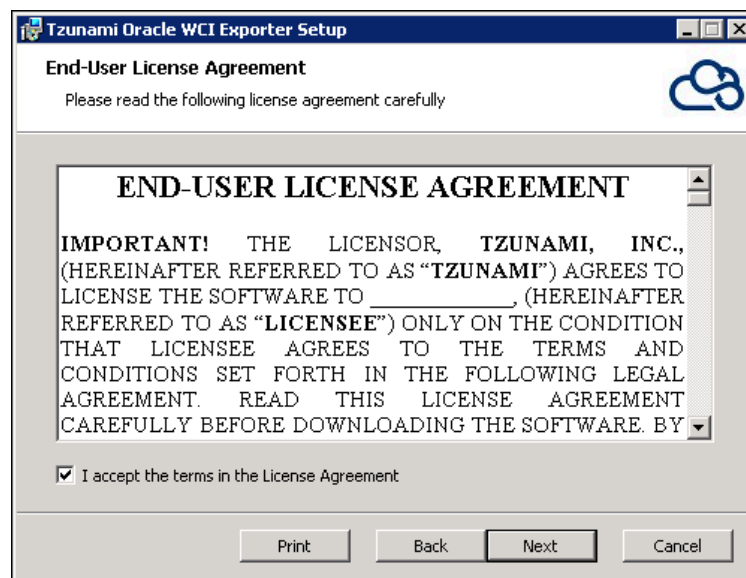


Figure 1-2: End-User License Agreement Window





You are advised to read the terms of the license carefully before proceeding with the installation. If you decline the license terms, the installation cannot proceed.

3. In the Custom Setup panel, do one of the following:
  - To accept the default Destination Folder, click **Next**.
  - Click **Browse**, locate and select a destination folder, click **OK**, and then click **Next**.

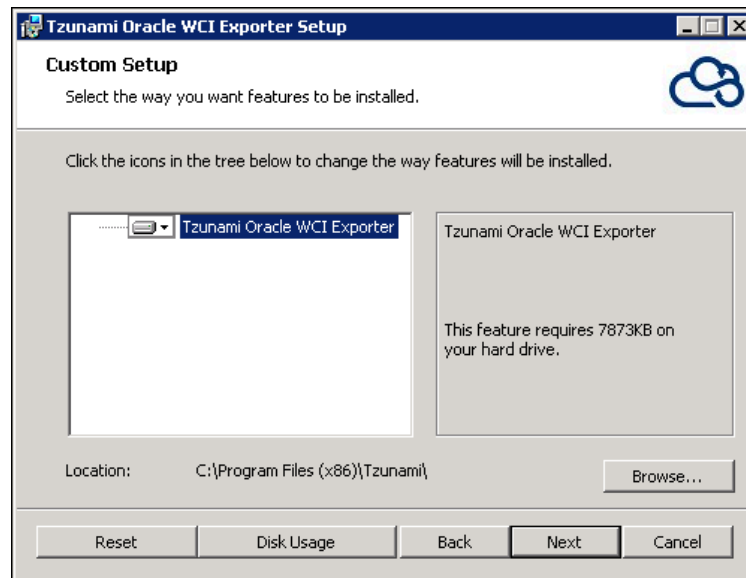


Figure 1-3: Custom Setup Window

4. In the Ready to install Tsunami Oracle WebCenter Interaction Exporter panel, click **Install**. Tsunami Oracle WebCenter Interaction Exporter is installed.

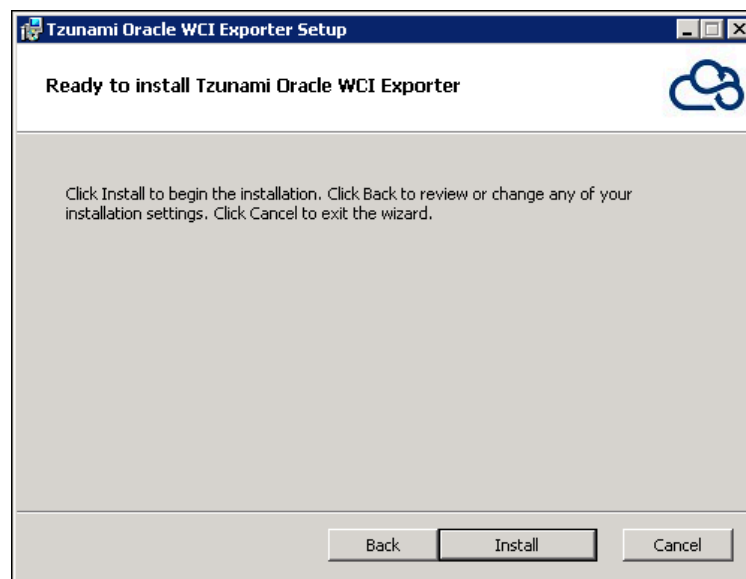
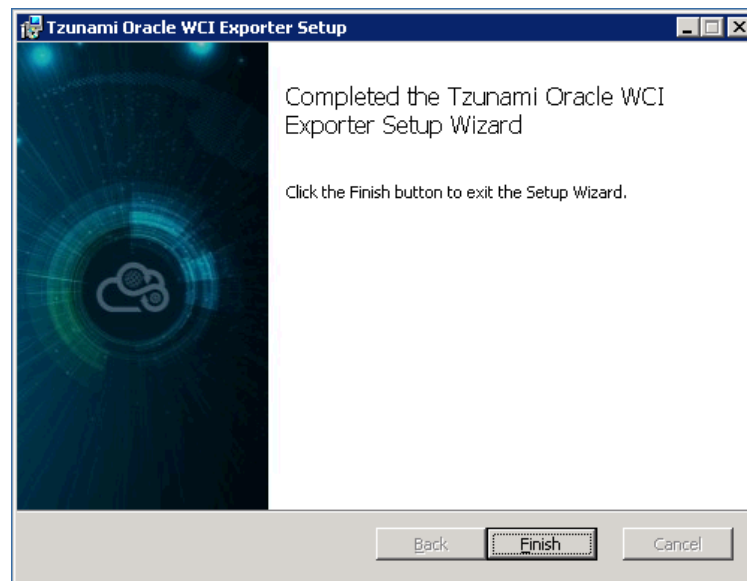


Figure 1-4: Installing Tsunami Confluence Exporter Window

5. Click **Finish** to exit from the setup wizard.



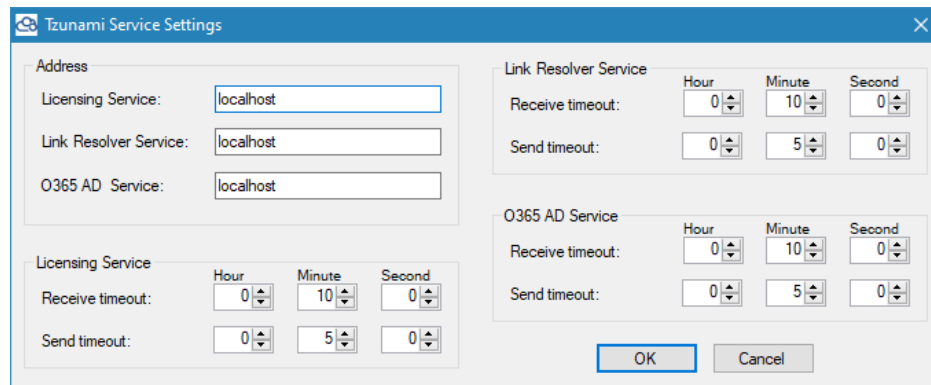
**Figure 1-5: Installation Complete Window**



When Tsunami Oracle WCI Exporter is installed, it comes with a default license that can be used for evaluation purpose only. This license is limited in time and number of operations.

## 1.3 CONFIGURATION OF TZUNAMI SERVICE SETTINGS

1. When installing **Tsunami Deployer/Exporter/Remote Service** for the first time, a **Tsunami Service Settings** dialog is displayed. In **Tsunami Service Settings**, the Licensing Service, Link Resolver Service and O365 AD Service are pointed to localhost (same machine).



**Figure 1-6 Deployer Settings Manager**



User can run the **Settings Manager.exe** application from the installation directory to display this service settings dialog at any time and updated the settings to point the Tsunami services as required.

In case of Remote Service installation, restart the Tsunami Remote Service after updating the Tsunami Service Settings.

If these services are installed in other machine, point to that machine with machine name or IP Address.

2. Click on **OK**.

## 1.4 POST INSTALLATION STEPS



This step grants SELECT permissions on Collab/Publisher tables to the portal database user.

This can be performed manually using the steps below or Exporter can perform this automatically for you. For more information, see **Table 2-3** on page **2-17**.

### For Collaboration table:

If the Oracle WCI Server has Collaboration component and you wish to export its contents or the contents published from Collaboration and/or Content Server to the Knowledge Directory, the Portal database user should be given the SELECT permission on specific tables in the Collaboration database. This should be done using the database scripts supplied with the setup, or manually by the database administrator. Separate scripts are provided for Collaboration table and Publishing table for Oracle Server and SQL Server.

Follow these steps to run this script to grant SELECT permissions on *Collaboration table* to portal database user on **Oracle Server**:

1. Copy the script `collaboration-server-portal-role-grant.sql` to a directory in the Oracle Server machine hosting Oracle WCI database or on a machine having Oracle client.
2. Open a command prompt window (**Start > Run**, type “cmd” and press **Enter**).
3. Switch to the directory containing the DB script copied in step 1.
4. Log in to Oracle with the collaboration database user credential by running the command.  

```
sqlplus <collab_user_name>/<user_pwd>@<ORACLE_SID>
@collaboration-server-portal-role-grant.sql
```

<ORACLE\_SID> is the Oracle service name assigned to Oracle WCI Server database.
5. You should receive the SQL prompt.
6. Execute the script by typing command:  

```
@collaboration-server-portal-role-grant.sql
```
7. Enter Portal database user name when prompted and press Enter. The script should be executed successfully.

Follow these steps to run this script to grant SELECT permissions on Collaboration table to portal database user on **SQL Server**:

1. Copy the script `collaboration-server-portal-role-grant.sql` to a directory in the SQL Server machine hosting Oracle WCI database or on a machine having SQL Server client.
2. Open the script in notepad and change the **portalusername** value (*portaluser*) in line `'SELECT @portalusername = 'portaluser''` to the portal database user created during installation.
3. Start Query Analyzer tool as the collaboration database user. Make sure that the collaboration database is shown in the database dropdown.
4. Browse to the directory containing the script copied in step 1, and open the file.
5. Execute the script and make sure that it is successfully executed.

#### For Publisher table:

Similarly if the Oracle WCI Server has Publisher (Content Server) component and you wish to export the contents published from the Publisher to the Knowledge Directory, the Portal database user should be given SELECT permission on specific tables in the Publisher database. Please note that this version of exporter can only export Publisher components published to the Knowledge Directory.

Follow these steps to run this script to grant SELECT permissions on *Publisher table* to portal database user on **Oracle Server**:

1. Copy the script `portal-collaboration-server-role-grant.sql` to a directory in the Oracle Server machine hosting Publisher database or on a machine having Oracle client.
2. Open a command prompt window (**Start > Run**, type "`cmd`" and press **Enter**).
3. Switch to the directory containing the DB script copied in step 1.
4. Log in to Oracle with the System database user credential by running the command:  

```
sqlplus <portal_user_name>/<portal_pwd>@<ORACLE_SID>
@portal-collaboration-server-role-grant.sql
```

<ORACLE\_SID> is the Oracle service name assigned to Publisher database.
5. You should receive the SQL prompt.
6. Execute the script by typing command:  

```
@portal-collaboration-server-role-grant.sql
```
7. Enter Portal database name, Portal database user name, Publisher database user name and password when prompted and press Enter. The script should be executed successfully.

Follow these steps to run this script to grant SELECT permissions on *Publisher tables* to portal database user on **SQL Server**:

1. Copy the script `portal-collaboration-server-role-grant.sql` to a directory in the SQL Server machine hosting Publisher database or on a machine having SQL Server client.
2. Open the script in notepad and change portaluser in line `exec sp_grantdbaccess 'portaluser'` to your portal database user name.
3. Start Query Analyzer as Publisher database user. Make sure that the publisher database is shown in the database dropdown.
4. Browse to the directory containing the script copied in step 1, and open the file.
5. Execute the script and make sure that it is successfully executed.
6. Please consult your database administrator prior to performing any changes to the Oracle WCI server. For questions, contact the Tsunami Support Team at [support@tsunami.com](mailto:support@tsunami.com)



The SQL Scripts for comes with the **Tsunami Oracle WCI Exporter** Setup. By default, SQL Scripts for the *Collaboration table* and *Publisher table* is located at "`C:\Program Files\Tsunami\Deployer 4.0\Exporters\WCI\SQL Scripts`", or where **Tsunami Oracle WCI Exporter** is installed.

## 1.5 UNINSTALL TZUNAMI ORACLE WCI EXPORTER

This section of the guide illustrates different ways to remove or uninstall Tzunami Oracle WCI Exporter from your Oracle WCI Server. Here are the two different ways to uninstall Tzunami Oracle WCI Exporters:

- Uninstallation using Installer
- Uninstallation using Control Panel

To uninstall Tzunami Oracle WCI Exporter, user needs to be a Local Administrator in the Oracle WCI Exporter installed machine. Uninstalling Tzunami Oracle WCI Exporter is simple and easy. You can remove or uninstall it in no time. You don't need to reboot your computer once the uninstalling process is complete.



Log files, licensing information files etc. will remain after uninstalling Tzunami Oracle WCI Exporter. You can manually delete those files from your computer if needed. By default logs are located at the "C:\Program Files\Tsunami\Deployer 3.4\Exporter\Logs", or where Tzunami Oracle WCI Exporter is installed. Tzunami Oracle WCI Exporter Options information will be available in "C:\Documents and Settings\All users\Application Data\Local\Tsunami" location.

### 1.5.1 Uninstallation using Installer

#### To uninstall Tzunami Oracle WCI Exporter using Installer

1. Close **Tzunami Oracle WCI Exporter**.
2. Unzip the zip file, and run `TsunamiOracleWCIExporter.msi`. The Tzunami Oracle WCI setup wizard (Welcome window) will launch. To advance through the remove installation wizard, click "**Next**" at the bottom of the screen.
3. In the Change, repair or remove installation panel, click "**Remove**" button to proceed to remove Tzunami Oracle WCI Exporter from your computer.
4. In the Ready to remove Tzunami Oracle WCI Exporter panel, click "**Remove**" to remove Tzunami Oracle WCI Exporter from your computer.
5. Click **Finish** to exit the setup wizard.



You can right-click Tzunami Oracle WCI Exporter setup

(`TsunamiOracleWCIExporter.msi`) file and select **Uninstall** to remove or uninstall Tzunami Oracle WCI Exporter from your computer.

## 1.5.2 Uninstallation using Control Panel

To uninstall Tzunami Oracle WCI Exporter using Control Panel

1. Close **Tzunami Oracle WCI Exporter**.
2. Click **Start > Control Panel > Add or Remove Programs**.
3. In Add or Remove Programs window, right-click the Tzunami Oracle WCI Exporter application you want to remove, and then click **Uninstall**.

# 2 TZUNAMI ORACLE WEBCENTER INTERACTION EXPORTER

This chapter contains information of Tzunami Oracle WCI Exporter. It contains the following topics:

- *Overview*
- *Exporting from Oracle WCI*
- *Command-line Export*
- *Logging settings*
- *Best Practice*



## 2.1 OVERVIEW

Tsunami Oracle WCI Exporter enables you to migrate contents from Oracle WCI to SharePoint 2007, SharePoint 2010, SharePoint 2013, SharePoint 2016 and SharePoint Online using Tsunami Deployer. Tsunami Oracle WCI exporter supports extraction of content from Oracle WCI and loads content into Tsunami Deployer.

To load Oracle WCI content into Tsunami Deployer, you must first extract the content, using Tsunami Oracle WCI Exporter, into TDX (Tsunami Deployer Export) and STDx (Separate Tsunami Deployer Export) files. You can then load this TDX file into a Deployer project.



When working with Tsunami Deployer on several machines, you can run an export on one machine and load the exported data on another.

Tsunami Oracle WCI Exporter is an extension module of Tsunami Deployer. You can work with this module independently of Tsunami Deployer.

### 2.1.1 Supported Types

The Tsunami Oracle WCI Exporter supports basically three types of content repositories:

**Knowledge Directory:** Oracle WCI has an embedded, portal-specific document content management system called the Knowledge Directory. The Knowledge Directory includes facilities for importing and uploading existing documents, for storing, sharing, and managing them, and for helping users find them through search and navigation. The contents model for Knowledge Directory is built on content items. The content items that are exported by Tsunami Oracle WCI Exporter are:

1. Documents
2. Links: these point to external or internal web contents
3. Shortcuts: these points to documents in other repositories like Collaboration Projects.
4. Published Documents
5. Content Service – Windows Files

**Projects:** Projects are part of a separate component Collaboration that interacts with Portal to provide tools for user interaction and work flow management. The items that are exported by Oracle WCI Exporter are:

1. Announcement
2. Discussion
3. Document Folder
4. Document
5. Event

## 6. Task List

**Publisher/Content Server:** Publisher is a web application that functions as a remote portlet server for BEA AquaLogic Interaction Publisher. Publisher enables content creations, content publishing and workflow management etc.



Tsunami Oracle WCI Exporter **does not support** extraction of contents from Publisher/Content Server. Only Published Documents in the Knowledge Directory are extracted.

### 2.1.2 Security

In addition to the structure and items, Tsunami Oracle WCI Exporter extracts security information. The following permissions are used in the exporter:

- None
- Read
- Write
- Edit
- Admin

Each item is assigned an ACL defining the permissions of the various members according to the roles they were assigned.



The exporter automatically creates six default roles that are used during the deployment process. The roles include None (No permission), Read (Read permission), Write (Read and Write permissions), Edit (Read, Write and Edit permissions), and Admin (user has full permissions).

## 2.2 EXPORTING FROM ORACLE WCI

The Tsunami Oracle WCI Exporter enables you to export Oracle WCI contents to a TDX file. It has a simple user interface and lets you quickly extract contents such as Projects, Attachments, Knowledge Directory etc.



When exporting, keep the following in mind:

**Export in small chunks:** When exporting from your source system, perform the export in small chunks of about 40K-50K files each that have a common business logic or some other logic.

**Ensure consistency:** Make sure that the content of the different exports does not overlap and that, while exporting, no changes are made to the source data.

In order to handle the different type of Oracle WCI installations and configurations, advanced settings and parameters are available in the `TsunamiExporter.exe.config` file. The file contains parameters which can be configured according to the Oracle WCI setup against which the exporter needs to run. Please refer the **Appendices A-B** for the various possible setups and configurations parameter needed.

### To export to a TDX file:

1. In Tsunami Deployer, right-click in the Oracle WCI tab source store area and select **Export Oracle WCI to TDX**.

Or

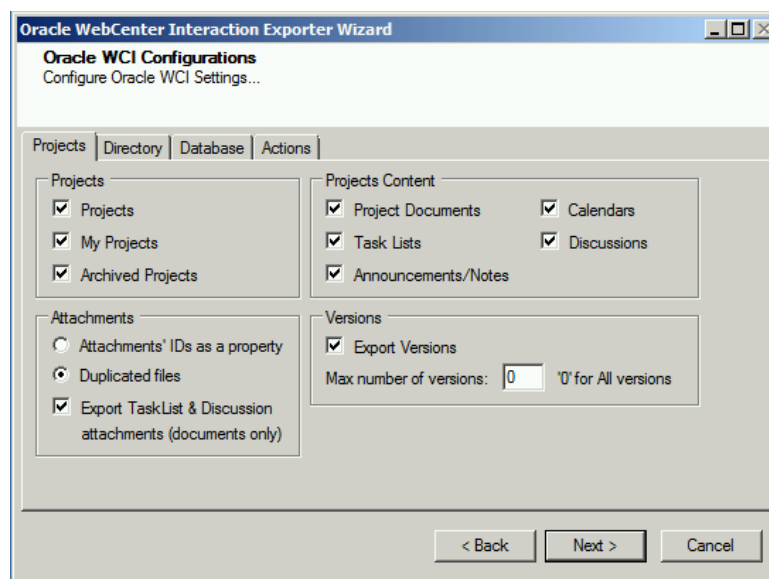
Click **Start > All Programs > Tsunami > Tsunami Oracle WCI Exporter**.

The Welcome screen of the Export Wizard appears.

2. Click **Next**. The Oracle WCI Configurations screen appears. Use this screen to enter the settings required for the exporter to connect to Oracle WCI. The screen includes three tabs: Projects, Directory, and Database.



#### a) **Project tab**



The **Project** tab allows you to select Projects, Project Attachments, Project contents, Version and their contents that you wish to migrate from Oracle WCI.



**Figure 2-1: Oracle WCI Configurations Screen – Projects Tab**

**Table 2-1: Oracle WCI Configurations, Projects Tab – Description of Fields**

| Field                       | Description  |
|-----------------------------|--|
| <b>Projects</b>             |  |
| Projects                    | Check this option if you wish to export Projects   |
| My Project                  | Check this option if you wish to export My Projects  |
| Archived Projects           | Check this option if you wish to export Archived Projects  |
| <b>Projects Content</b>     |  |
| Project Documents           | Check this option if you wish to export documents inside Projects.   |
| Task Lists                  | Check this option if you wish to export Task Lists and Tasks inside Projects.  |
| Announcements/Notes         | Check this option if you wish to export Announcements and Notes inside Projects.   |
| Calendars                   | Check this option if you wish to export Calendars and Events inside Projects.  |
| Discussions                 | Check this option if you wish to export Discussions, Topics and Replies inside Projects.   |
| <b>Versions</b>             |  |
| Export Versions             | Check this option if you wish to export all versions of items.<br> Uncheck this option, if you wish to export current versions of each item.  |
| Max number of Versions      | Enter the number of versions you would like to export for each item.<br> Setting this value to zero will export all versions.<br>If number of maximum versions is specified, number of versions from latest version are exported. |
| <b>Attachments</b>          |  |
| Attachments' IDs a property | Choose how to handle attachments:<br>Check this option if you wish to handle Attachment IDs of items as property.  |

| Field  | Description  |
|--|--|
| Duplicated files   | <p>Check this option if you wish to export duplicate attachment files.</p>  <p>You can export Documents as attachments (other types of attachments will not be exported).</p> <p>The documents that are selected to be exported as both regular documents and as attachments will be duplicated. Since, SharePoint does not support attachments as a reference to another document.</p> |
| Export Task List & Discussion attachments (documents only) | <p>Check this option if you want to export Task List and Discussion attachments.</p>  <p>You can export Documents as attachments (other types of attachments will not be exported)</p>  |

## b) Directory Tab

The **Directory** tab allows you to Knowledge Directory content. It allows you to export links as file and export documents shortcuts as link.

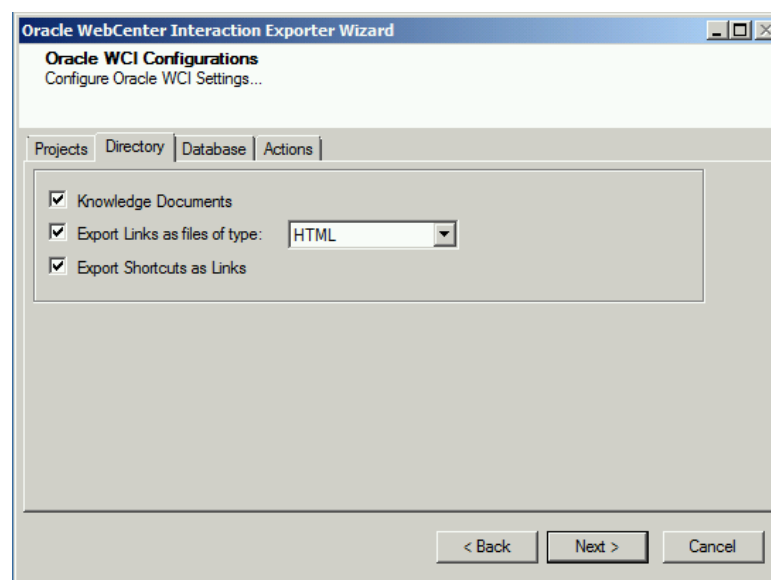


Figure 2-2: Oracle WCI Configurations Screen – Directory Tab

Table 2-2: Oracle WCI Configurations, Directory Tab – Description of Fields

| Field                     | Description   |
|---------------------------|---|
| Knowledge Documents       | Check this option if you wish to export documents inside the Knowledge Directory folders.   |
| Export Links as files     | <p>Check this option if you wish to export Links (Web Documents) as files. This allows the migration of the Web Documents into a SharePoint Documents Library, side-by-side with regular documents.</p> <p>In case of exporting Links as files, users can choose between HTML files or ASPX files (which can be mapped to Document Library in the Microsoft SharePoint as a “Link to a Document” Content Type.)</p> |
| Export Shortcuts as Links | Check this option if you wish to export Document Shortcuts as links. If not checked, a copy of the original document is migrated for Shortcuts.   |

### c) Database Tab

The database tab allows you to enter the information required for the exporter to access Collaboration database and Publisher database.

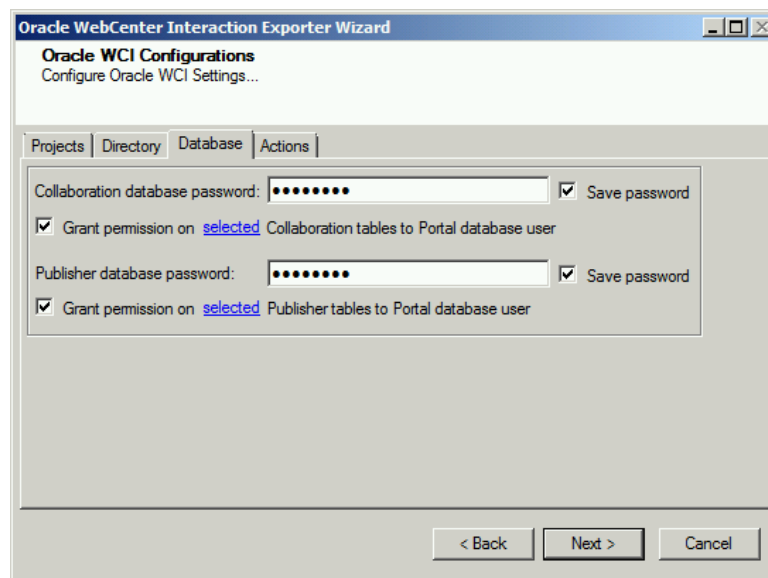


Figure 2-3: Oracle WCI v6.x Configurations Screen – Database Tab

Table 2-3: Oracle WCI v6.x Configurations, Database Tab – Description of Fields

| Field   | Description   |
|---|---|
| Collaboration database password   | Put the password for the Collaboration database user created during collaboration installation in this field.   |
| Grant permission on selected Collaboration tables to Portal database user | Check this option if you wish to grant required SELECT permission on Collaboration tables to Portal database user automatically. Certain configuration parameters will need to be filled up in 'TsunamiExpoter.exe.config' file, located in the exporter installation directory, as described in Appendix A and B below. Granting permission can also be done manually configuration of Tsunami Service Settings. |
| Save password   | Check this option if you wish to save the Collaboration database password. If checked, the database password is remembered when the exporter is run next time.  |
| Publisher database password   | Put the password for the Publisher (or Content Server) database user created during installation in this field.   |
| Grant permission on selected Publisher tables to Portal database user     | Check this option if you wish to grant required SELECT permission on Publisher tables to Portal database user automatically. Certain configuration parameters will need to be filled up in 'TsunamiExpoter.exe.config' file, located in the exporter installation directory, as described in Appendix A and B below. Granting permission can also be done manually as described in Tsunami Service Settings.      |
| Save password   | Check this option if you wish to save the Publisher database password. If checked, the database password is remembered when the exporter is run next time.  |



Collaboration database password is needed for exporting Collaboration contents and documents published to Knowledge Directory from Collaboration.

Publisher database password is needed for exporting documents published to Knowledge Directory from Publisher.

A message will prompt if the DB password is missing or incorrect. You can choose to ignore and proceed with the export but an error message will prompt if you try to export the component for which correct password was not supplied.

#### d) Actions Tab

The **Actions** tab allows you to use different actions that can be taken in the exporter.

- **Auto Pause:** The export process is paused and resumed using this functionality at a set time each day. The feature can be turned on or off using the **Use Auto Pause** check box. The feature can be checked by the user, who can also select the pause and resume times. The user can deselect it to turn off the feature.

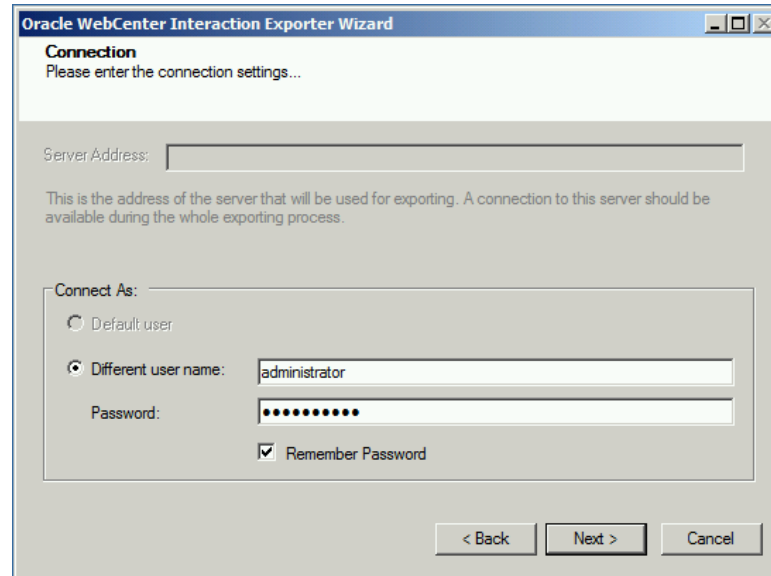
Figure 2-4: Oracle WCI Configurations Screen – Actions Tab

Table 2-4: Oracle WCI Configurations, Actions Tab - Description of fields

| Field                      | Description  |
|----------------------------|--|
| <b>Auto Pause</b>          |  |
| Use Auto Pause             | To use the auto-pause and resume feature, select this option. To turn off this function, uncheck this box. |
| Pause export every day at  | Set the daily time that the export process should pause.   |
| Resume export every day at | Set the daily time for restarting the interrupted export operation.  |

The settings for actions are only applied to this exporter instance that is currently executing when the user clicks the **Next** button

3. Click **Next**. The Connection screen appears. You need to provide the required portal credential to connect to the Oracle WCI server. If your Oracle WCI server supports user authentication from an external source (like LDAP) other than ALUI database, and you want to use this user for connection, you need to provide username in the format: <Authentication Source Category>\<username> **i.e.** by providing the Authentication Source Category followed by the username.



**Figure 2-5: Connection Screen**

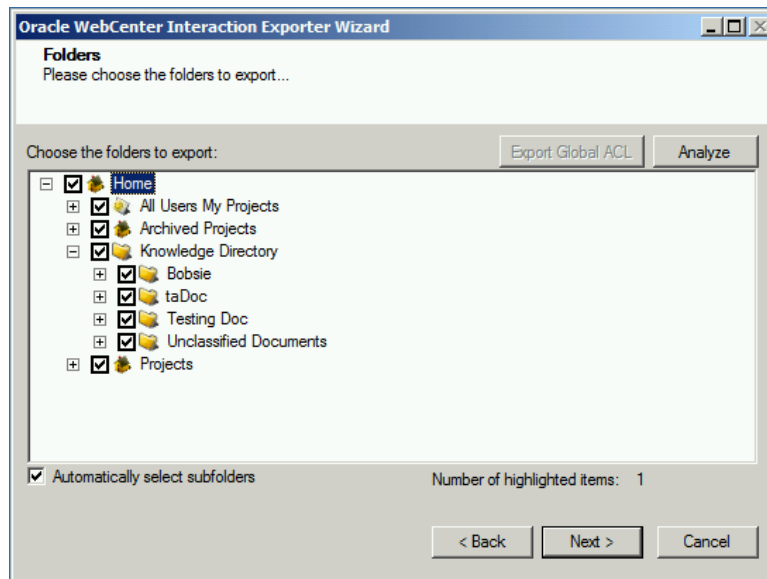
Authentication source category is not required if the user is in local ALUI database.

4. Click **Next**. The Folders screen appears.

Tsunami Exporter provides quick analysis option before exporting to know the size, count of contents inside selected folder.

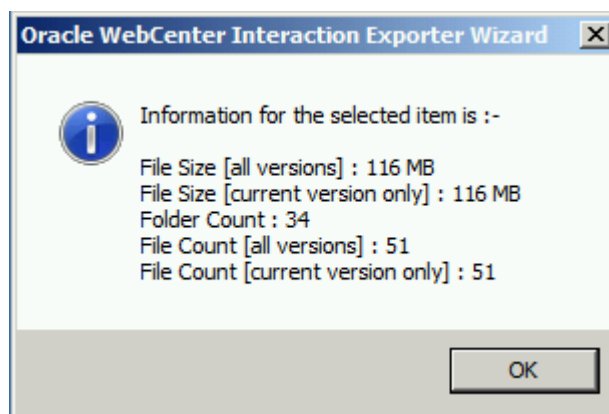
If you want to analyze the content: Check on the Folder(s) in tree view, then **Analyze** button is enabled. Click **Analyze**.





**Figure 2-6 Analyze Option**

Analyzer screen appears. Analyzer screen provides the detail information that helps to plan for the export (chunk size) based on File size and number of items.

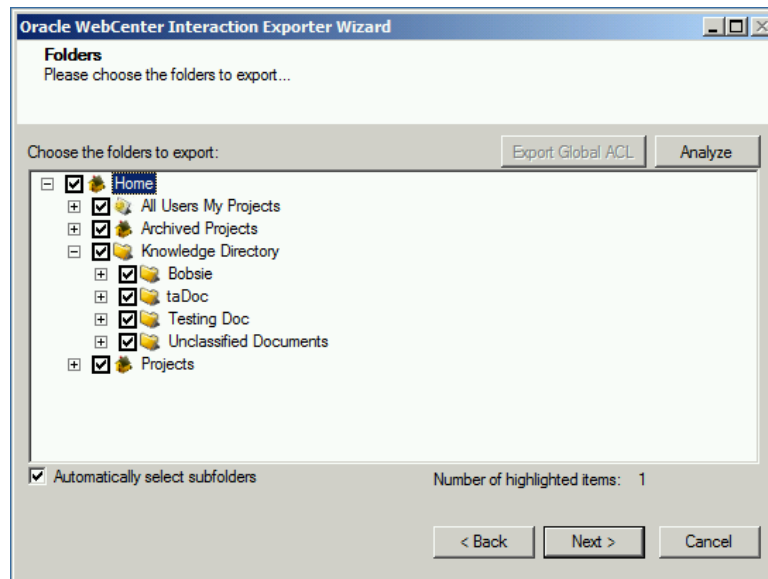


**Figure 2-7 Analyzer Information**

**Table 2-5 Analyzer Information Description**

| Field                             | Description   |
|-----------------------------------|---|
| File Size [all versions]          | Provides the total size of files for all versions of documents.       |
| File Size [current version only]  | Provides the total size of files for current version of documents.    |
| Folder Count                      | Provides the number of folders.                                       |
| File Count [all versions]         | Provides the total number of files for all versions of documents.     |
| File Count [current version only] | Provides the total number of files for current versions of documents. |
| Data Item Count                   | Provides the total number of data item.                               |

5. Select the folders to export.

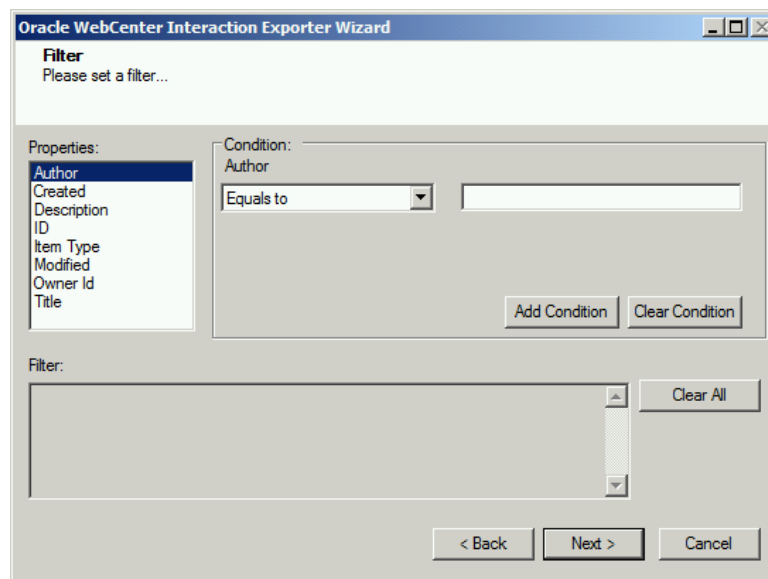


**Figure 2-8: Folder Selection Screen**



You can select all subfolders of a selected folder by checking **Automatically select subfolders**.

6. Click **Next**. The Filter screen appears.



**Figure 2-9: Filter Screen**

7. Set up filtering as follows:
  - a) In the Properties field, select a property.
  - b) In the Condition field, select a condition from the drop down list and enter or select values in the corresponding field.
  - c) Click **Add Condition**. The condition is added to the Filter area, displaying the full filter expression.



You can only add one condition per property.

You can edit a condition for a property by selecting the property and modifying the condition type or values that are currently assigned to it.

You can remove a condition from a property or all the conditions from all the properties by clicking Clear Condition or Clear All, respectively.

This option works only for Data Items.

If multiple conditions are applied, only items that match all conditions are exported.

8. Click **Next**. The Destination Folder screen appears.

Figure 2-10: Destination Folder Screen

Specify where to export the files and generated TDX information. Make sure you are saving to a folder with a descriptive name and under a well-organized file system hierarchy. It is recommended to export to a folder that is as close to the root as possible.



When exporting deep hierarchy, the property which store the path for exported folder/files may exceed the maximum character supported by the property (typically 260 characters defined in the Windows API). To overcome such condition, it is recommended to export to a folder that is as close to the root as possible.

Starting in Windows 10, version 1607, MAX\_PATH limitations have been removed from common Win32 file and directory functions. Please, refer information published by Microsoft from following link and consult with your system administrator to remove the limitation whenever possible.

<https://docs.microsoft.com/en-us/windows/win32/fileio/maximum-file-path-limitation?tabs=registry>

Click **Save** under **Export specification file** for saving export specification details as an XML file which can be used to run the exporter in command-line mode. See the section 'Error! Reference source not found.' below for more details.

9. Click **Next**.



If the export folder already exists, a warning appears, informing you that the destination folder already exists and if you continue all existing information will be deleted.

Clicking **OK** confirms overwrite and clicking **Cancel** returns you to the Destination Folder screen to change the destination folder.

An Exporting screen appears with a progress bar and execution report, and the export process begins. During the export process, a **Pause** button is displayed. Users can manually pause and resume the export process (despite of scheduled pause/resume time) by clicking on **Pause/Resume** button.

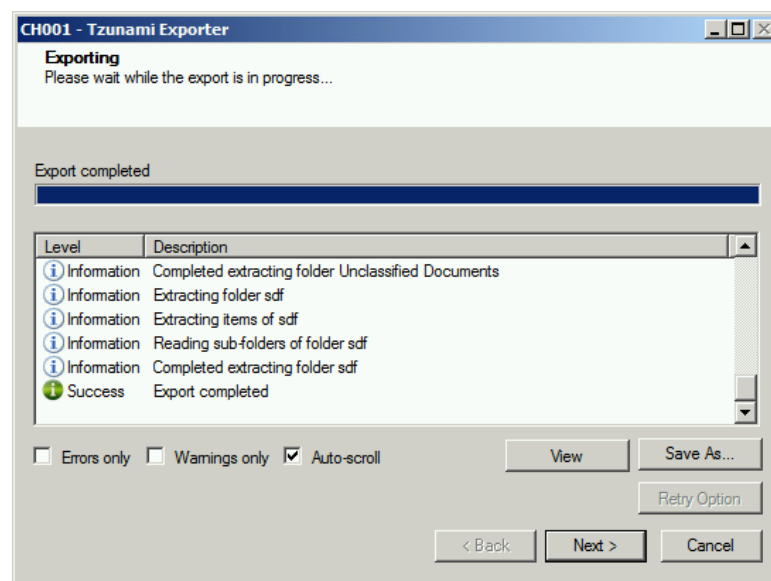


Figure 2-11: Exporter Progress Screen



You can save the export report by clicking **Save** as after export is complete.

You can check **Auto-scroll** to display the latest progress messages, as they appear.

You can display only export errors by checking **Errors only**.

You can display only export warnings by checking **Warnings only**

10. Click **Retry Option**, if there are failed item(s).
11. Click **Next**. The Export Complete screen appears.
12. Click **Done**. The Oracle WCI Export wizard is closed.

After the extraction process completes successfully, you are prompted to load the exported data into the current Tsunami Deployer project. Clicking '**Yes**' begins the process of loading

the content from the previously exported TDX file into the project. For more information about loading sources, refer to the [Tsunami Deployer User Guide](#).

## 2.3 COMMAND-LINE EXPORT

Tsunami Exporter for Oracle WCI provides ability to run export sessions non-interactively using command line instructions. This allows administrators to plan and schedule long running migration jobs through scripts, batch files and schedulers according to needs and organizational timetables. To run the exporter in batch mode you will need exporter specification file explained in the 'Choose Destination Folder' step of the export wizard. The file contains all the export option details including:

- Source ECM connectivity information (Server Address, User Name, Password etc.)
- Items to export
- Destination and Log Folder
- Filter
- Exporter specific options

This file can be edited to suit your needs however the XML schema of the file should not be altered. It is recommended that you generate a sample specifications file in the **Destination Folder Screen** selection step of the export wizard and use it as a template to create your own specification file.

Once the specification file is ready, you can run the exporter from command line using command:

**TsunamiExporter.exe [-r <ResultFile>] -s <ExportSpecificationsFile>**

### Usage

| Field | Description  |
|-------|--|
| -r    | Outputs export results into an XML file [Optional] |
| -s    | XML file containing export specifications          |

### For example:

```
C:\User\Administrator> "C:\Program Files (x86)\Tsunami\Deployer  
4.0\Exporters\OracleWCI\TsunamiExporter.exe" -s "D:\Spec Files\specs1.xml"
```

```
C:\Program Files (x86)\Tsunami\Deployer 4.0\Exporters\OracleWCI> TsunamiExporter.exe -s  
"D:\Spec Files\specs1.xml"
```

Based on your needs you can create number of specification files and use them to run multiple export sessions as batch commands.



You will need to provide absolute path for **TsunamiExporter.exe** and **ExportSpecificationsFile** in the command if you are not running from the exporter installation directory.

In Microsoft Windows Server 2003 and Windows Server 2008 environment, if UAC (User Access Control) is enabled, Users with low privileges sometimes cannot export ECM contents. To export contents using command line, User must run with elevated or administrative privileges.

To export contents with elevated or administrative privileges, you can run the exporter from command line using command:

**RUNAS /trustlevel:"Unrestricted" "<Exporter Installation Directory>\TsunamiExporter.exe" -s "<Spec file path>\Specfilename.xml"**

**For example:**

RUNAS /trustlevel:"Unrestricted" "C:\Program Files (x86)\Tsunami\Deployer 4.0\Exporters\OracleWCI\TsunamiExporter.exe" -s "D:\Spec Files\specs1.xml"

## 2.4 LOGGING SETTINGS

In Tsunami Exporter, log is written in a persistent medium having as much information as possible about events that occur while the software runs. That information plays a vital role while diagnosing if any issue occurs during the export process. Hence, it is worth mentioning that logger writes each and every details during.

Tsunami Inc provides the settings for writing logs. There are the following log levels that the user can change before running the tool.

1. Go to installation directory of the exporter and open **TsunamiExporter.exe.config** file in an editor.
2. Locate the key and set corresponding values as mentioned below:
  - **LogLevel:** Set the esteem to “Debug” or “High” or “Normal” or “low” or “none”.

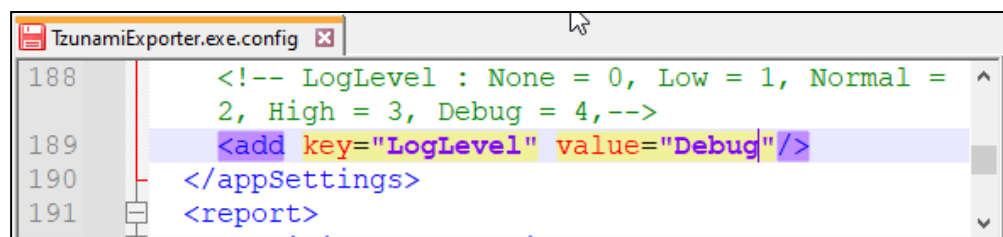


Figure 2-12 Log level Settings

- **Debug:** Writes logs as much as possible. So, this setting includes the maximum level of verbosity. By default, the tool is packaged with this setting.
  - **High:** Writes logs as much as possible for warnings and errors. However, it will not log possible diagnostic information.
  - **Normal:** Writes logs for anticipated errors and warnings.
  - **Low:** Critical errors are logged. There will be as low as possible information logged.
  - **None:** No such logs are written.
3. Save the file. Then run the exporter.

## 2.5 BEST PRACTICES

Due to the technological differences between Oracle WCI and SharePoint, the following best practices should be taken into consideration:

- Migrate folders to their relative list types, based on the items in those folders:

Table 2-6: Target Structure Guidelines

| Oracle WCI Item Type                   | Relevant SharePoint Types  |
|--|--|
| Projects/My Projects/Archived Projects | <ul style="list-style-type: none"><li>• Site Collection</li><li>• Site</li></ul> |

| Project Documents   | Documents inside Libraries  |
|---------------------|---|
| Task List           | <ul style="list-style-type: none"> <li>• Tasks List</li> <li>• Folders inside Tasks Lists</li> </ul>  |
| Announcements       | Announcements List  |
| Calendars           | Calendar Lists  |
| Discussions         | Discussion Board  |
| Knowledge Folders   | <ul style="list-style-type: none"> <li>• Document Libraries</li> <li>• Folders inside Document Libraries</li> </ul>   |
| Knowledge Documents | Documents inside a Document Libraries   |
| Knowledge Links     | <ul style="list-style-type: none"> <li>• Link inside a Links List.</li> <li>• Documents inside Document Libraries (with the Link to a Document Content Type)</li> </ul> |

- Knowledge Links can be migrated in two ways:
  - Migration as data-items in a Links List.
  - Migration as documents in a Document Library. Microsoft SharePoint provides a Content Type named Link to a Document, which functions in a similar way to a shortcut. For more information about migrating using this Content Type, please contact the Tsunami Support Team, at [support@tzunami.com](mailto:support@tzunami.com).



# 3 APPENDICES

## 3.1 APPENDIX A – ORACLE WEBCENTER INTERACTION WITH SQL

| Scenarios   | Parameters   | Notes  |
|---|--|--|
| Portal, Collaboration, Publisher and Portal API service on the same machine   | <b>Mandatory:</b><br>None  |  |
| [Local Collaboration, Publisher and Portal API service]   | <b>Optional:</b><br>*CollabDBName<br>*CollabDBHostName<br>*PublisherDBHostName<br>*PublisherDBVendor<br>*PortalDBUser<br>CollabDBUser<br>LinkedDatabaseAlias<br>CollabDocumentRepositoryPath<br>PortalDocumentRepositoryPath<br>PortalAPIServicePort<br>PortalAPIServiceHostName<br>PublisherURL<br>PublisherDBName<br>PublisherDBUserName |  |
| Collaboration and/or Publisher on a machine other than the Portal machine. Portal API service host on the same machine as the portal. | <b>Mandatory:</b><br>*CollabDBName<br>*CollabDBHostName<br>*PublisherDBHostName<br>*PublisherDBVendor<br>*PortalDBUser   | CollabDBName, CollabDBUser, LinkedDatabaseAlias are required only if Collaboration is installed and its content should be extracted.<br><br>PublisherURL, PublisherDBName, PublisherDBUserName are required only if Publisher is installed and its content published to the Knowledge Directory should be extracted. |
| [Remote Collaboration and Publisher but local Portal API service]   | CollabDBUser<br>LinkedDatabaseAlias<br>PublisherURL<br>PublisherDBName<br>PublisherDBUserName<br><b>Optional:</b><br>CollabDocumentRepositoryPath<br>PortalDocumentRepositoryPath<br>PortalAPIServicePort<br>PortalAPIServiceHostName  |  |

| Scenarios  | Parameters  | Notes   |
|--|---|---|
| Collaboration and/or Publisher on machines other than the Portal machine. Portal API service also on a separate machine than the portal. | <b>Mandatory:</b><br>*CollabDBName<br>*CollabDBHostName<br>*PublisherDBHostName<br>*PublisherDBVendor<br>*PortalDBUser<br>CollabDBUser<br>LinkedDatabaseAlias<br>PortalAPIServicePort<br>PortalAPIServiceHostName<br>PublisherURL<br>PublisherDBName<br>PublisherDBUserName | CollabDBName, CollabDBUser, LinkedDatabaseAlias are required only if Collab is installed and its content should be extracted.<br><br>PublisherURL, PublisherDBName, PublisherDBUserName are required only if Publisher is installed and its content published to the Knowledge Directory should be extracted. |
| [Remote Collaboration, Publisher and Portal API service]   | <b>Optional:</b><br>CollabDocumentRepositoryPath<br>PortalDocumentRepositoryPath  |   |

\*These parameters are not required in exporter configuration file (`TsunamiExporter.exe.config`) located in exporter installation folder, if user grants SELECT permissions on Collaboration and Publisher database manually as specified in Post Installation Step.

If parameter values are left blank, the exporter will try to auto-detect the settings from local Portal server. Remote components (Collaboration/Publisher etc.) will fail to be extracted in this case. These parameters have therefore been listed under mandatory parameters.

Export should work without optional parameters. However if there is an issue in export, these parameters can be configured for better results. For details on how to find the different parameters needed, please refer to the '`TsunamiExpoter.exe.config`' file in the exporter installation folder.

## 3.2 APPENDIX B – ORACLE WebCenter INTERACTION WITH ORACLE

| Scenarios   | Parameters  | Notes   |
|---|---|---|
| Portal, Collaboration, Publisher and API Service on the same machine  | <b>Mandatory:</b><br>None   |   |
| [Local Collaboration, Publisher and Portal API service]   | <b>Optional:</b><br>*CollabDBName<br>*PortalDBUser<br>*PublisherDBVendor<br>CollabDBUser<br>LinkedDatabaseAlias<br>CollabDocumentRepositoryPath<br>PortalDocumentRepositoryPath<br>PortalAPIServicePort<br>PortalAPIServiceHostName<br>PublisherURL<br>PublisherDBName<br>PublisherDBUserName |   |
| Collaboration and/or Publisher on a machine other than the Portal machine. Portal API service host on the same machine as the portal. | <b>Mandatory:</b><br>*CollabDBName<br>*PortalDBUser<br>*PublisherDBVendor<br>CollabDBUser<br>LinkedDatabaseAlias  | CollabDBUser, LinkedDatabaseAlias are required only if Collaboration is installed and its content should be extracted.                                  |
| [Remote Collaboration and Publisher but local Portal API service]   | PublisherURL<br>PublisherDBUserName<br><b>Optional:</b><br>CollabDBName<br>PublisherDBName<br>CollabDocumentRepositoryPath<br>PortalDocumentRepositoryPath<br>PortalAPIServicePort<br>PortalAPIServiceHostName  | PublisherURL, PublisherDBUserName are required only if Publisher is installed and its content published to the Knowledge Directory should be extracted. |

| Scenarios   | Parameters  | Notes   |
|---|---|---|
| Collaboration and/or Publisher on machines other than the Portal machine. Portal API service host also on a separate machine than the portal. | <b>Mandatory:</b><br>*CollabDBName<br>*PortalDBUser<br>*PublisherDBVendor<br>PortalAPIServicePort<br>PortalAPIServiceHostName                                     | CollabDBUser, LinkedDatabaseAlias are required only if Collaboration is installed and its content should be extracted.                                  |
| [Remote Collaboration, Publisher and Portal API service]  | PublisherURL<br>PublisherDBUserName<br><b>Optional:</b><br>PublisherDBName<br>LinkedDatabaseAlias<br>CollabDocumentRepositoryPath<br>PortalDocumentRepositoryPath | PublisherURL, PublisherDBUserName are required only if Publisher is installed and its content published to the Knowledge Directory should be extracted. |

\*These parameters are not required in exporter configuration file (`TsunamiExporter.exe.config`) located in exporter installation folder, if user grants SELECT permissions on Collaboration and Publisher database manually as specified in Post Installation Step.

If parameter values are left blank, the exporter will try to auto-detect the settings from local Portal server. Remote components (Collaboration/Publisher etc.) will fail to be extracted in this case. These parameters have therefore been listed under mandatory parameters.

Export should work without optional parameters. However if there is an issue in export, these parameters can be configured for better results. For details on how to find the different parameters needed, please refer to the '`TsunamiExpoter.exe.config`' file in the exporter installation folder.

# 4 COPYRIGHT AND TRADEMARK

© Copyright 2024. Tsunami Inc. All rights reserved.

All intellectual property rights in this publication are owned by Tsunami, Inc. and protected by United States copyright laws, other applicable copyright laws and international treaty provisions. Tsunami, Inc. retains all rights not expressly granted. No part of this publication may be reproduced in any form whatsoever or used to make any derivative work without prior written approval by Tsunami, Inc.

No representation of warranties for fitness for any purpose other than what is specifically stated in this guide is made either by Tsunami, Inc. or by its agents.

Tsunami, Inc. reserves the right to revise this publication, and/or make improvements or changes in the product(s) and/or the program(s) described in this documentation at any time without prior notice.

Any software on removable media described in this publication is furnished under a license agreement included with the product as a separate document. If you are unable to locate a copy, please contact Tsunami, Inc. and a copy will be forwarded to you.

Tsunami is either a registered trademark or a trademark of Tsunami, Inc. in the United States and/or other countries.

All other brand or product names are trademarks or registered trademarks of their respective companies.

For further information, you can contact Tsunami Inc. at:

Tsunami Inc.

601 108th Avenue, NE

Suite 1900

Bellevue, WA 98004, USA

Email: [sales@tsunami.com](mailto:sales@tsunami.com), [support@tsunami.com](mailto:support@tsunami.com)

Web: <http://www.tsunami.com>