



Tsunami Deployer

Documentum Exporter Guide

Supports migration of EMC Documentum content repositories into Microsoft SharePoint using Tsunami Deployer

Version 4.0
Last Updated: March 31, 2024

Table of Contents

PREFACE	IV
INTENDED AUDIENCE.....	IV
CONVENTIONS	IV
TECHNICAL SUPPORT.....	V
COMMENTS AND SUGGESTIONS	V
1 INSTALLING TZUNAMI DOCUMENTUM EXPORTER.....	1-1
1.1 SYSTEM REQUIREMENTS.....	1-2
1.2 PERMISSION REQUIREMENTS.....	1-2
1.2.1 Connecting Documentum Server	1-2
1.3 INSTALLING TZUNAMI DOCUMENTUM EXPORTER	1-3
1.4 CONFIGURATION OF TZUNAMI SERVICE SETTINGS.....	1-5
1.5 UNINSTALL TZUNAMI DOCUMENTUM EXPORTER.....	1-6
1.5.1 Uninstallation using Installer	1-6
1.5.2 Uninstallation using Control Panel.....	1-7
2 TZUNAMI DOCUMENTUM EXPORTER	2-8
2.1 OVERVIEW.....	2-9
2.1.1 Supported Types	2-9
2.1.2 Security	2-9
2.2 EXPORTING FROM DOCUMENTUM.....	2-2
2.3 COMMAND-LINE EXPORT.....	2-12
2.4 LOGGING SETTINGS.....	2-13
2.5 BEST PRACTICE	2-14
3 ANNEX	3-15
3.1 ADD CUSTOM FILTER PROPERTIES IN TZUNAMI DOCUMENTUM EXPORTER.....	3-15
4 COPYRIGHT AND TRADEMARK.....	4-17

List of Tables

Table 1-1: System Requirements	1-2
Table 2-1: Documentum Exporter, Welcome screen - Description of fields	2-2
Table 2-2: Documentum Configurations Screen – Description of Fields	2-2
Table 2-3: Documentum Configurations Screen, General Tab – Description of Fields.....	2-3
Table 2-4: Documentum Configurations Screen, Advanced Tab – Description of Fields	2-5
Table 2-5: Documentum Configurations, Actions Tab - Description of fields.....	2-6
Table 2-6 Analyzer Information Description	2-7
Table 2-7: Target Structure Guidelines	2-14

List of Figures

Figure 1-1: Welcome Window	1-3
Figure 1-2: End-User License Agreement Window	1-3
Figure 1-3: Custom Setup Window	1-4
Figure 1-4: Installing Tsunami Documentum Exporter Window.....	1-4
Figure 1-5: Installation Complete Window	1-5
Figure 1-6 Deployer Settings Manager	1-5
Figure 2-1: Documentum Exporter Wizard.....	2-2
Figure 2-2: Documentum Configurations Screen – Credentials Tab.....	2-2
Figure 2-3: Documentum Configurations Screen – General Tab	2-3
Figure 2-4: Documentum Configurations Screen – Advanced Tab.....	2-4
Figure 2-5: Documentum Configurations Screen – Actions Tab.....	2-5
Figure 2-6 Analyze Option.....	2-6
Figure 2-7 Analyzer Information	2-7
Figure 2-8 Global ACL Mapping file.....	2-7
Figure 2-9 Folders Selection Screen.....	2-8
Figure 2-10: Filter Screen	2-8
Figure 2-11 Multiple Filter Properties with AND Condition.....	2-9
Figure 2-12 Multiple Filter Properties with OR Condition	2-10
Figure 2-13: Destination Folder Screen	2-10
Figure 2-14: Exporter Progress Screen.....	2-11
Figure 2-15 Log level Settings	2-14
Figure 3-1 Custom Filter Property Settings.....	3-15
Figure 3-2 Custom Property in TDX file.....	3-16
Figure 3-3 Custom Property in Filter Screen.....	3-16

PREFACE

This guide provides installation procedures for Tsunami Documentum Exporter and detail steps to extract contents from Documentum using Tsunami Documentum Exporter. The guide also describes how to extract contents non-interactive way using command-line instructions and best practice.

This preface contains the following topics.

- Intended Audience
- Conventions
- Technical Support
- Comments and Suggestions

INTENDED AUDIENCE

Tsunami Documentum Exporter Guide is intended for:

- System Administrators who are responsible for exporting Documentum contents and setting migration environment using Tsunami Deployer.
- Project Managers and IT Managers who create and regulate usage of Tsunami Deployer and Tsunami Documentum Exporter.

CONVENTIONS

The following text conventions are used in this document:

- Commands and keywords are given in **boldface**
- Terminal sessions, console screens, or system file names are displayed in `fixed width fonts`



Caution indicates that the described action might result in program malfunction or data loss.



Notes contain helpful suggestions about or references to materials not contained in this manual.



Tips provide information that might help you solve a problem.

TECHNICAL SUPPORT

Before contacting Tzunami Support Team, ensure that you are referencing the latest copy of this user guide (Ctrl+Click to follow link) [Tzunami Deployer Documentum Exporter Guide](#).

For additional information, please contact Tzunami Support Team at support@tzunami.com.

COMMENTS AND SUGGESTIONS

Your feedback is important to us and will help us to provide the most accurate and high quality information possible in our documentation. Send us comments or suggestions by email to support@tzunami.com. Be sure to include as much of the following as possible:

- The document title.
- The location that the document was accessed from (either downloaded from Tzunami web site or the Tzunami Deployer User Guide and Tzunami Documentum Exporter Guide available in Tzunami Deployer).
- The section or chapter number and the original text found in the document.



When you send information to Tzunami Deployer, you grant Tzunami a non-exclusive right to use or distribute the information in any way it believes appropriate without incurring any obligation to you.

1 INSTALLING TZUNAMI DOCUMENTUM EXPORTER

This chapter contains information about installing Tzunami Documentum Exporter. It contains the following topics:

- *System Requirements*
- *Permission Requirements*
- *Installing Tzunami Documentum Exporter*
- *Uninstall Tzunami Documentum Exporter*

1.1 SYSTEM REQUIREMENTS

The following requirements must be met in order to use Tsunami Documentum Exporter:

Table 1-1: System Requirements

Components	Minimum Requirements
Computer and processor	2GHz Pentium processor or equivalent
Memory	2 GB (Minimum); 4GB (Recommended)
Hard disk	50Mb (additional space will be required for the Tsunami Deployer projects, which may vary from 10 Mb to 4 GB).
Supported Operating System	Windows Server 2003/2008/2012, Windows XP, Windows Vista, Windows 7, Windows 8 & Windows 10.
Supported Architectures	x86 and x64
Network	Intranet/Internet access depending on connectivity requirements
Display	800 x 600, 256 colors (minimum); 1024 x 768 high color, 32-bit (recommended)
Microsoft .NET Framework	Microsoft .Net Framework 3.5

1.2 PERMISSION REQUIREMENTS

1.2.1 Connecting Documentum Server

For connecting to Documentum server using Tsunami Documentum Exporter, you need a user account with the following permissions in the Documentum Server:

- User account should have at least **None** Basic Privileges
- User account should have at least **Consumer** level Client Capability
- User account should have **Default Permission Set**.
- User must be member of Local Users and Groups in Documentum server.

1.3 INSTALLING TZUNAMI DOCUMENTUM EXPORTER

Tsunami Documentum Exporter requires that the Documentum Foundation Classes (DFC) to be installed and configured on the machine where the exporter is running.

To install Tsunami Documentum Exporter:

1. Unzip the zip file, and run `TsunamiDocumentumExporter.msi`. The Tsunami Documentum Exporter setup wizard (Welcome window) will launch. To advance through the install wizard, click **Next**.

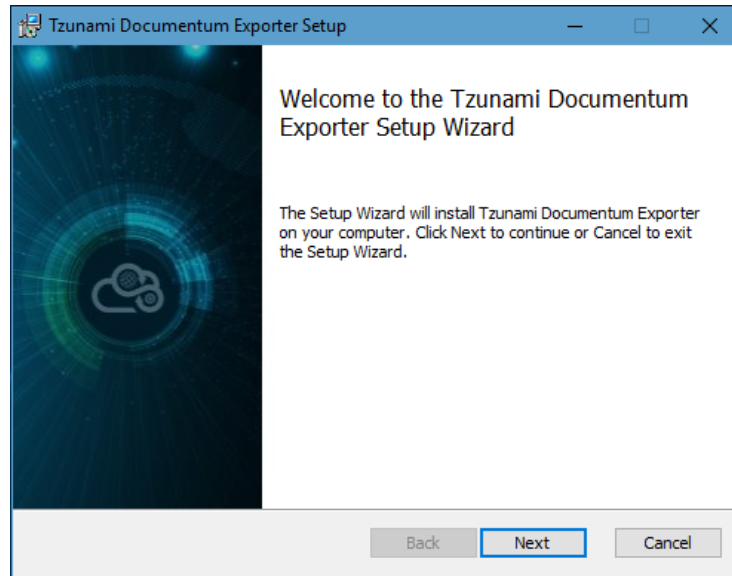


Figure 1-1: Welcome Window

2. In the End-User Licensing Agreement panel, click **"I accept the terms in the License Agreement"** and click **Next** to continue installation.

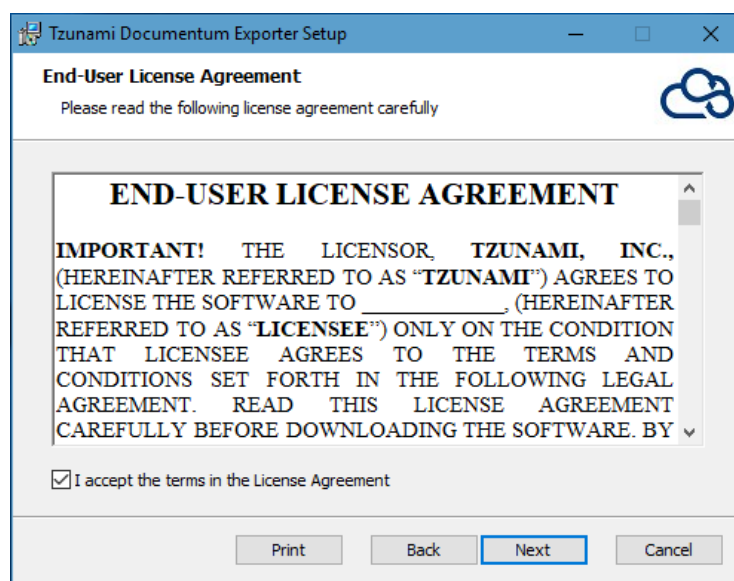


Figure 1-2: End-User License Agreement Window



You are advised to read the terms of the license carefully before proceeding with the installation. If you decline the license terms, the installation cannot proceed.

3. In the Custom Setup panel, do one of the following:
 - To accept the default Destination Folder, click **Next**.
 - Click **Browse**, locate and select a destination folder, click **OK**, and then click **Next**.

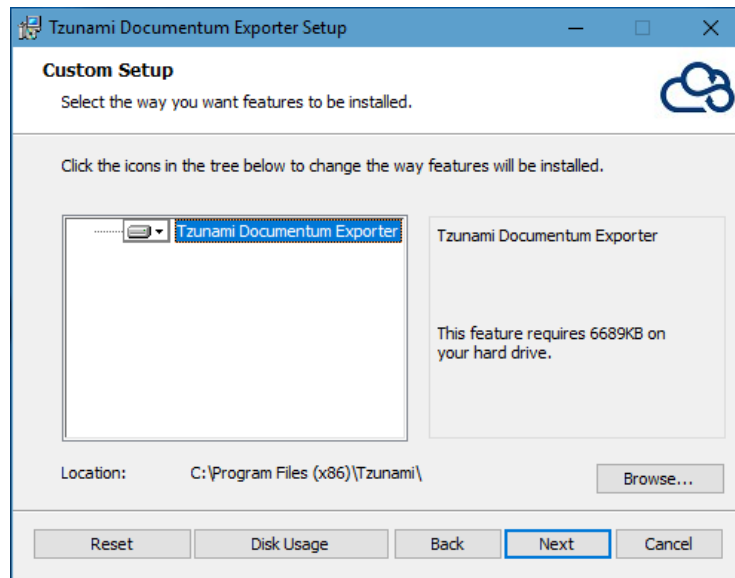


Figure 1-3: Custom Setup Window

4. In the Ready to install Tsunami Documentum Exporter panel, click **Install**.

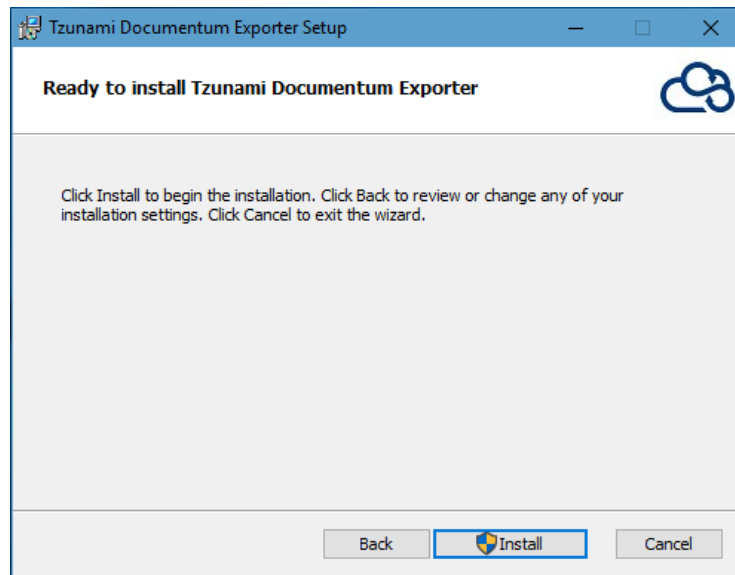


Figure 1-4: Installing Tsunami Documentum Exporter Window

5. In the Completed Tzunami Documentum Exporter Setup Wizard, to exit the wizard, click **Finish**.

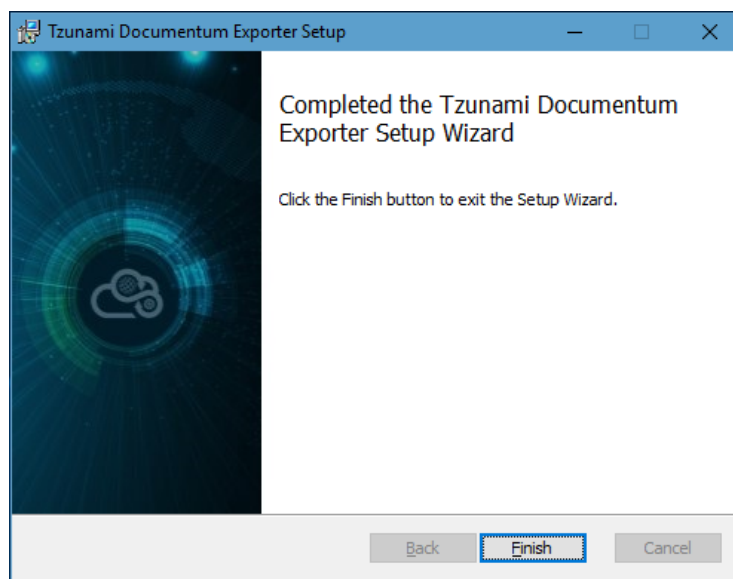


Figure 1-5: Installation Complete Window



When Tzunami Documentum Exporter is installed, it comes with a default license that can be used for evaluation purpose only. This license is limited in time and number of operations.

1.4 CONFIGURATION OF TZUNAMI SERVICE SETTINGS

1. When installing **Tzunami Deployer/Exporter/Remote Service** for the first time, a **Tsunami Service Settings** dialog is displayed. In **Tsunami Service Settings**, the Licensing Service, Link Resolver Service and O365 AD Service are pointed to localhost (same machine).

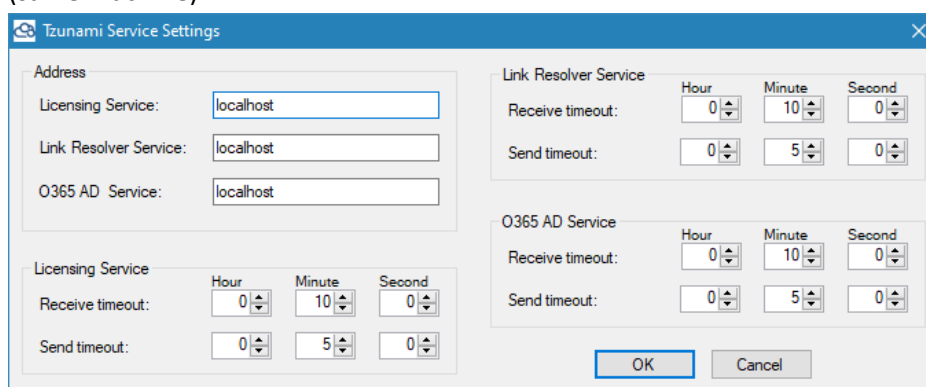


Figure 1-6 Deployer Settings Manager



User can run the **Settings Manager.exe** application from the installation directory to display this service settings dialog at any time and updated the settings to point the Tzunami services as required.

In case of Remote Service installation, restart the Tzunami Remote Service after updating the Tzunami Service Settings.

If these services are installed in other machine, point to that machine with machine name or IP Address.

2. Click on **OK**.

1.5 UNINSTALL TZUNAMI DOCUMENTUM EXPORTER

This section of the guide illustrates different ways to remove or uninstall Tzunami Documentum Exporter from your Documentum Server. Here are the two different ways to uninstall Tzunami Documentum Exporters:

- Uninstallation using Installer
- Uninstallation using Control Panel

To uninstall Tzunami Documentum Exporter, user needs to be a Local Administrator in the Documentum Exporter installed machine. Uninstalling Tzunami Documentum Exporter is simple and easy. You can remove or uninstall it in no time. You don't need to reboot your computer once the uninstalling process is complete.



Log files, licensing information files etc. will remain after uninstalling Tzunami Documentum Exporter. You can manually delete those files from your computer if needed. By default logs are located at the "C:\Program Files\Tsunami\Deployer 4.0\Exporter\Logs", or where Tzunami Documentum Exporter is installed. Tzunami Documentum Exporter Options information will be available in "C:\Documents and Settings\All users\Application Data\Local\Tsunami" location.

1.5.1 Uninstallation using Installer

To uninstall Tzunami Documentum Exporter using Installer

1. Close **Tzunami Documentum Exporter**.
2. Unzip the zip file, and run `TsunamiDocumentumExporter.msi`. The Tzunami Documentum setup wizard (Welcome window) will launch. To advance through the remove installation wizard, click "**Next**" at the bottom of the screen.
3. In the Change, repair or remove installation panel, click "**Remove**" button to proceed to remove Tzunami Documentum Exporter from your computer.
4. In the Ready to remove Tzunami Documentum Exporter panel, click "**Remove**" to remove Tzunami Documentum Exporter from your computer.
5. Click **Finish** to exit the setup wizard.



You can right-click Tzunami Documentum Exporter setup (`TsunamiDocumentumExporter.msi`) file and select **Uninstall** to remove or uninstall Tzunami Documentum Exporter from your computer.

1.5.2 Uninstallation using Control Panel

To uninstall Tzunami Documentum Exporter using Control Panel

1. Close **Tzunami Documentum Exporter**.
2. Click **Start > Control Panel > Add or Remove Programs**.
3. In Add or Remove Programs window, right-click the Tzunami Documentum Exporter application you want to remove, and then click **Uninstall**.

2 TZUNAMI DOCUMENTUM EXPORTER

This chapter contains information about Tsunami Documentum Exporter. It contains the following topics:

- *Overview*
- *Exporting from Documentum*
- *Command-line Export*
- *Logging settings*
- *Best Practice*

2.1 OVERVIEW

Tsunami Documentum Exporter enables migrating Documentum content into SharePoint 2007, SharePoint 2010, SharePoint 2013, SharePoint 2016, SharePoint 2019 and SharePoint Online using Tsunami Deployer.

To load Documentum content into Tsunami Deployer, you must first extract the content, using Tsunami Documentum Exporter, into TDX (Tsunami Deployer Export) and STDX (Separate Tsunami Deployer Export) files. You can then load this TDX file into a Deployer project.



When working with Tsunami Deployer on several machines, you can run an export on one machine and load the exported data on another.

Tsunami Documentum Exporter is distributed as an external tool from Tsunami Deployer.

2.1.1 Supported Types

The following items are exported from Documentum:

- Cabinets (General and Personal)
- Folders
- Documents (including custom types)



- Shared Document in different locations: Documentum server allows user to share document in different location. Similarly, it also allows particular version of a document to be shared in different location.

The **Tsunami Documentum Exporter** supports extraction of such shared document from different location as well.

However, if particular version of the document is shared in different location, such version of shared document cannot be extracted from shared location due to API limitation.

- Virtual Documents



- Virtual Documents are converted to Folders.

2.1.2 Security

In addition to the structure and items, Tsunami Documentum Exporter extracts security information. The following permissions are used in the exporter:

- | | |
|-----------|---------------------|
| • Browse | • Write |
| • Read | • Delete |
| • Relate | • Change State |
| • Note | • Change Permission |
| • Version | • Change Ownership |

- Change Location
- None
- Execute Procedure

Each item is assigned an ACL defining the permissions of the various members according to the roles they were assigned.



The exporter automatically creates four default roles that are used during the deployment process. The roles include Reader (Browse and Read permissions), Contributor (Browse, Read, Relate and Note permissions), Web Designer (Browse, Read, Relate, Note, Version, Write and Delete permissions), and Administrator (user has full permissions).

2.2 EXPORTING FROM DOCUMENTUM

The Tsunami Documentum Exporter enables you to export Documentum content to a TDX file.



When exporting, keep the following in mind:

Export in small chunks: When exporting from your source system, perform the export in small chunks of about 40K-50K files each that have a common business logic or some other logic.

Ensure consistency: Make sure that the content of the different exports does not overlap and that, while exporting, no changes are made to the source data.

To export to a TDX file:

1. In Tsunami Deployer, **Right-Click** in the Documentum tab source store area and select **Export Documentum to TDX**.

Or

Click **Start > All Programs > Tsunami > Tsunami Documentum Exporter**

The Welcome screen of the Export Wizard appears.

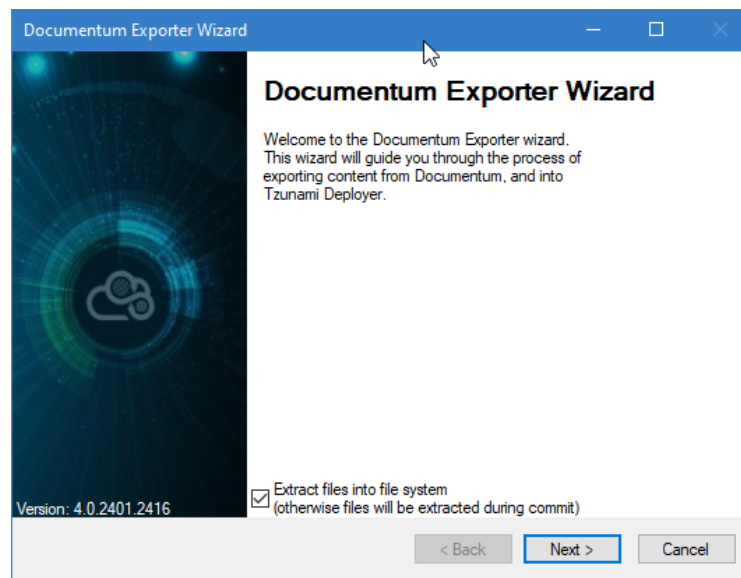



Figure 2-1: Documentum Exporter Wizard

Table 2-1: Documentum Exporter, Welcome screen - Description of fields

Fields	Description
Extract files into file system (otherwise files will be extracted during commit	<p>Check this option if you wish to download the binary files from Documentum server to the file system and store them in the FileStore folder, in the same location as the TDX file.</p> <p>If this option is unchecked, no files are downloaded at the export stage. The files are only downloaded when they are needed, in the commit stage.</p>  <ul style="list-style-type: none"> The Webtop URL must be provided when Extract files into file system option is unchecked. For more detail see, Advanced tab on page 2-4. To download files from Documentum server during commit stage, you must install Tsunami Documentum Exporter on the Tsunami Deployer installed machine.

- Click **Next**. The Documentum Configurations screen appears with three tabs: Credentials, General, and Advanced.
- Click the **Credentials** tab and enter the information required for the exporter to connect to Documentum.

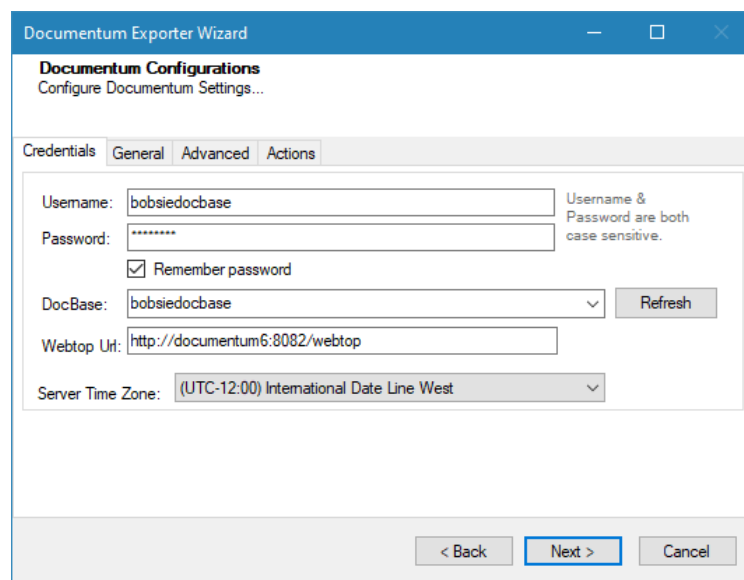



Figure 2-2: Documentum Configurations Screen – Credentials Tab

Table 2-2: Documentum Configurations Screen – Description of Fields


Field	Description
Username	Enter the username to use when connecting to the Documentum DocBase.
Password	Enter the password to use when connecting to the Documentum DocBase.


Field	Description
Remember password	Check this option if you wish to save your password for next login
DocBase	Select the DocBase to connect to in order to perform the export. Click Refresh to view the list of available DocBases.
Webtop Url:	Enter the Webtop Url for Documentum. This is an optional field used for assembling source URL property. [For e.g. http://documentum:8080/Webtop/]  The Webtop URL must be provided when Extract files into file system option is unchecked in Documentum Export Wizard screen.
Server Time Zone:	Select the Documentum Server time zone to extract the data time value correctly.

- Click the **General** tab and enter general export information.

Figure 2-3: Documentum Configurations Screen – General Tab

Table 2-3: Documentum Configurations Screen, General Tab – Description of Fields

Field	Description
Export security	Check this option if you wish to export the security permissions of items.
Export extended permissions set as separate role	Check this option if you wish to export each extended permissions set as separate role. This will maintain the granularity of permissions as available in the Documentum.  If you do not check this option, extended permissions are extracted without preserving granularity of combinations.
Export Virtual Documents	Check this option if you wish to export virtual documents. Exported virtual documents are converted to folders during the export process.
Skip Checked Out Items	Check this option if you wish to exclude items in checked out state.
Export Renditions	Check this option if you wish to extract rendition documents.

Field	Description
Skip Nested Groups and Subgroups	Check this option to exclude the nested groups and subgroups.
Export versions	Check this option if you wish to export all versions of documents.  If you do not check this option, only the latest version of each document is exported.
Export as version of same document. (name and extension will be of current version)	Check this option to export document with name and extension of current version for the document. It preserves the existing version behavior and extract all versions with current version file name and extension.
Export as separate documents on own separate folder. (name and extension will be its own)	Check this option to export as separated document with name and extension of its own in own separate folder for the document. A separate folder is created with current version file name and all version files with its original name and extension.
Links - Folders	A Documentum folder can be located in more than one folder, but SharePoint does not support this behavior. Specify whether to export such a folder only once (in the first parent it appears in), to duplicate it in each location in which it appears or export as .aspx link file pointing to the original folder.
Links	A Documentum item can be located in more than one folder, but SharePoint does not support this behavior. Specify whether to export such an item only once (in the first parent it appears in), to duplicate it in each location in which it appears or export as .aspx link file pointing to the original folder.

- Click the **Advanced** tab to enter advanced export information.

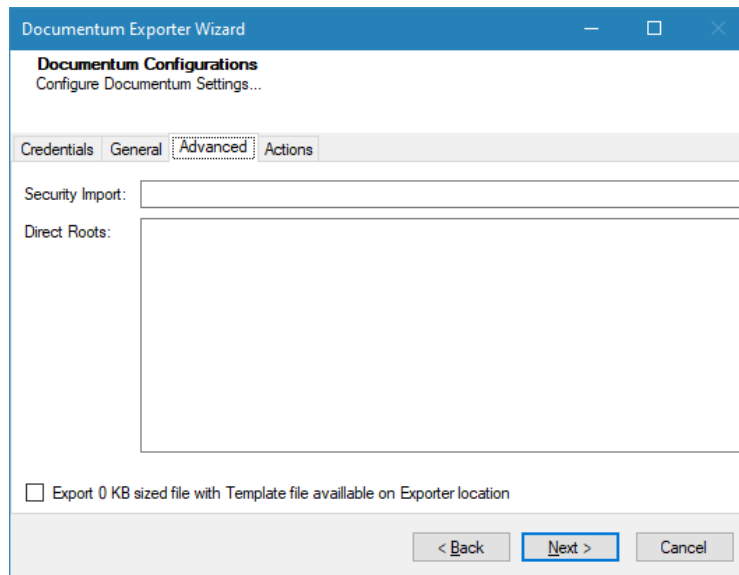



Figure 2-4: Documentum Configurations Screen – Advanced Tab

Table 2-4: Documentum Configurations Screen, Advanced Tab – Description of Fields

Field	Description
Security Import	<p>If you are performing multiple exports, it is more efficient to export security entities from another TDX file rather than from the Documentum server. Enter the full path of a TDX file from which to import security entities. Note that even if the TDX file you specify is missing some users or groups, they are exported as part of the regular export.</p> <p> Select “Export security” option in the General tab to import security from another TDX file.</p>
Direct Roots	Enter the r_object_id of the required folder to be used as a root folder. Multiple entries are allowed, separated with semicolon (;) such as '0b0000003800221ac;0b0000003800221a6;09000000380004d2b'.
Export 0 KB size file with Template file available on Exporter location	Check this option to export 0 KB sized file.

6. Click on **Actions** tab

The **Actions** tab allows you to use different actions that can be taken in the exporter.

- **Auto Pause:** The export process is paused and resumed using this functionality at a set time each day. The feature can be turned on or off using the **Use Auto Pause** check box. The feature can be checked by the user, who can also select the pause and resume times. The user can deselect it to turn off the feature.

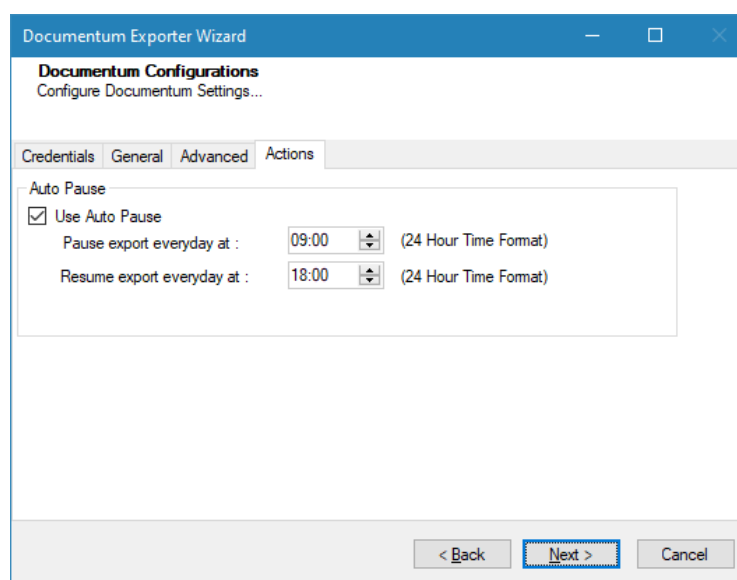


Figure 2-5: Documentum Configurations Screen – Actions Tab

Table 2-5: Documentum Configurations, Actions Tab - Description of fields

Field	Description
Auto Pause	
Use Auto Pause	To use the auto-pause and resume feature, select this option. To turn off this function, uncheck this box.
Pause export every day at	Set the daily time that the export process should pause.
Resume export every day at	Set the daily time for restarting the interrupted export operation.

The settings for actions are only applied to this exporter instance that is currently executing when the user clicks the **Next** button.

- Click **Next**. The Folders screen appears.

Tsunami Exporter provides quick analysis option before exporting to know the size, count of contents inside selected folder.

If you want to analyze the content: Check on the Folder(s) in tree view, then **Analyze** button is enabled. Click **Analyze**.

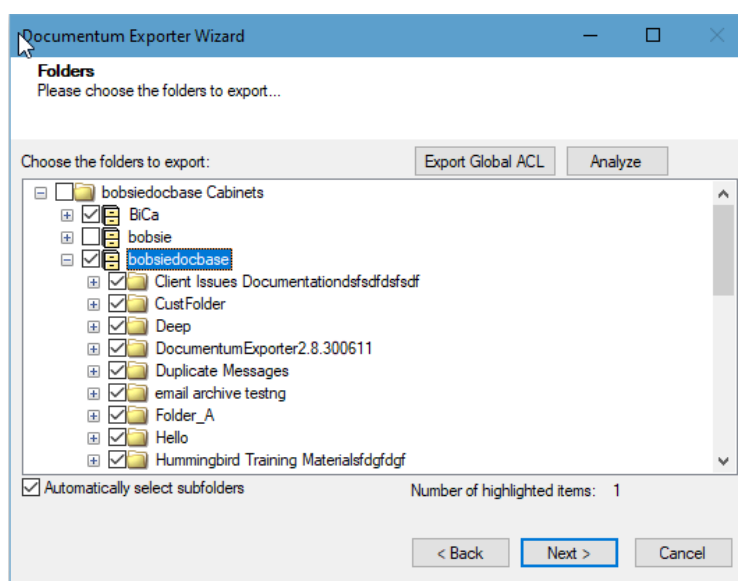


Figure 2-6 Analyze Option

Analyzer screen appears. Analyzer screen provides the detail information that helps to plan for the export (chunk size) based on File size and number of items.

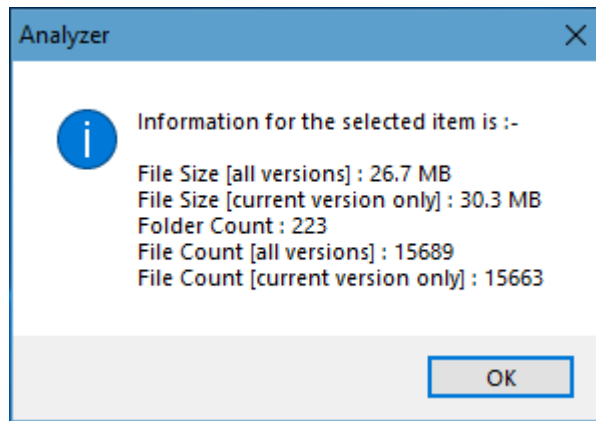


Figure 2-7 Analyzer Information

Table 2-6 Analyzer Information Description

Field	Description
File Size [all versions]	Provides the total size of files for all versions of documents.
File Size [current version only]	Provides the total size of files for current version of documents.
Folder Count	Provides the number of folders.
File Count [all versions]	Provides the total number of files for all versions of documents.
File Count [current version only]	Provides the total number of files for current versions of documents.

You can export the Roles, Groups and Users in a file by clicking on **Export Global ACL** button. A progress bar appears while exporting the information. The file is by default exports to:

Location: C:\ProgramData\Tsunami\GlobalAclExport\Documentum

File Name: global_acl.xml

This file is used in Tsunami Deployer when using Global ACL Mapping. Refer **Deployer User Guide's** section **Global ACL Mapping** for more details.

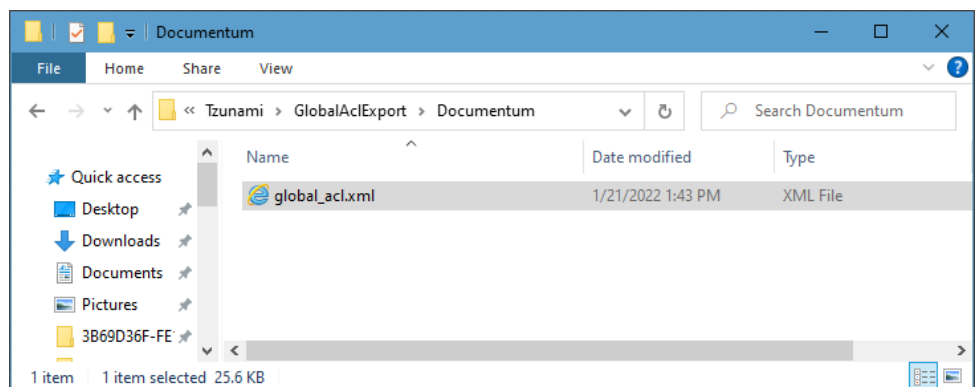


Figure 2-8 Global ACL Mapping file

8. Select folders to export.

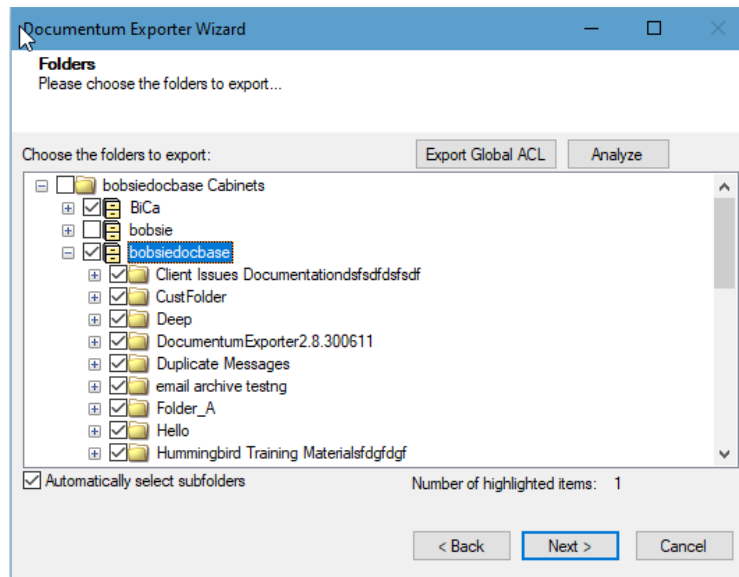


Figure 2-9 Folders Selection Screen



You can select all subfolders of a selected folder by checking Automatically select subfolders.

9. Click **Next**. The Filter screen appears.

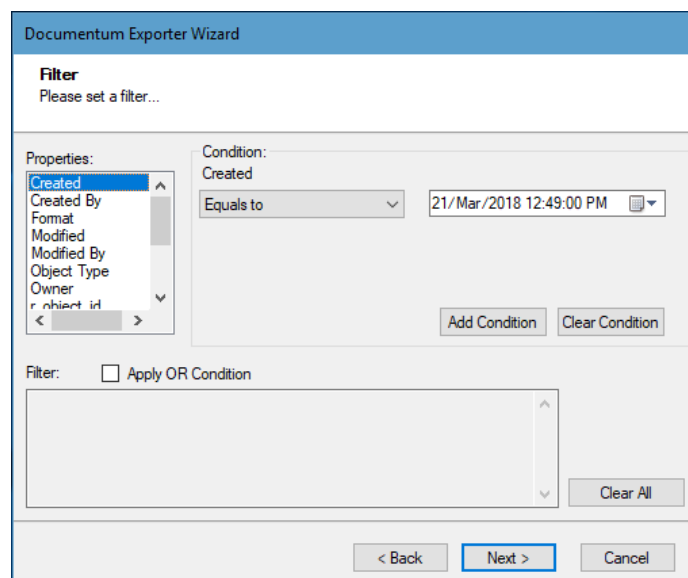


Figure 2-10: Filter Screen

10. Set up filtering as follows:
 - a. In the Properties field, select a property.

- b. In the Condition field, select a condition from the dropdown list and enter or select values in the corresponding field.
- c. Click **Add Condition**. The condition is added to the Filter area, displaying the full filter expression.



You can only add one condition per property.

You can edit a condition for a property by selecting the property and modifying the condition type or values that are currently assigned to it.

You can remove a condition from a property or all the conditions from all the properties by clicking **Clear Condition** or **Clear All**, respectively.

You must check/uncheck **Apply OR Condition** filter when multiple properties are used in filter at once.

If **Apply OR Condition** filter is unchecked, multiple properties are treated with 'AND' logic by default.

For example, if 'Created' and 'Object Type' properties are applied in filter with unchecked **Apply OR Condition** filter, the item(s) will be filtered based on the valid condition(s) from 'Created' and 'Object Type' properties.

Figure 2-11 Multiple Filter Properties with AND Condition

If **Apply OR Condition** filter is checked, multiple properties are treated with 'OR' logic.

For example, if 'Created' and 'Object Type' properties are applied in filter with checked **Apply OR Condition** filter, the item(s) will be filtered based on the valid condition(s) from 'Created' or 'Object Type' properties.

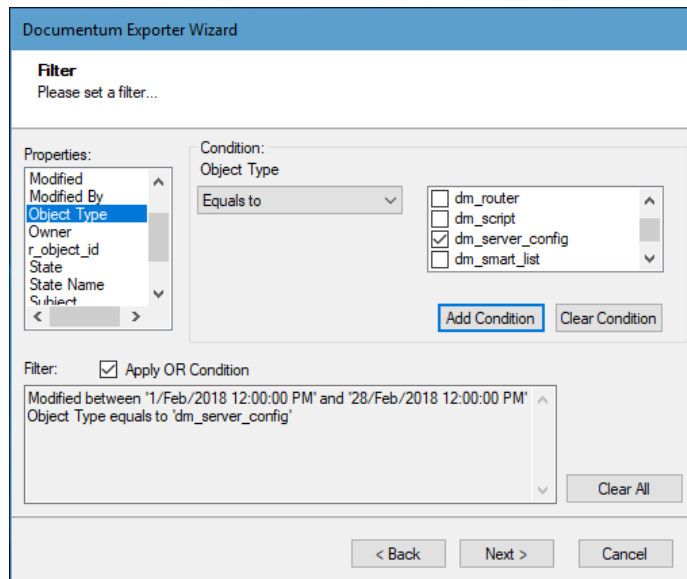


Figure 2-12 Multiple Filter Properties with OR Condition

11. Click **Next**. The Destination Folder screen appears.

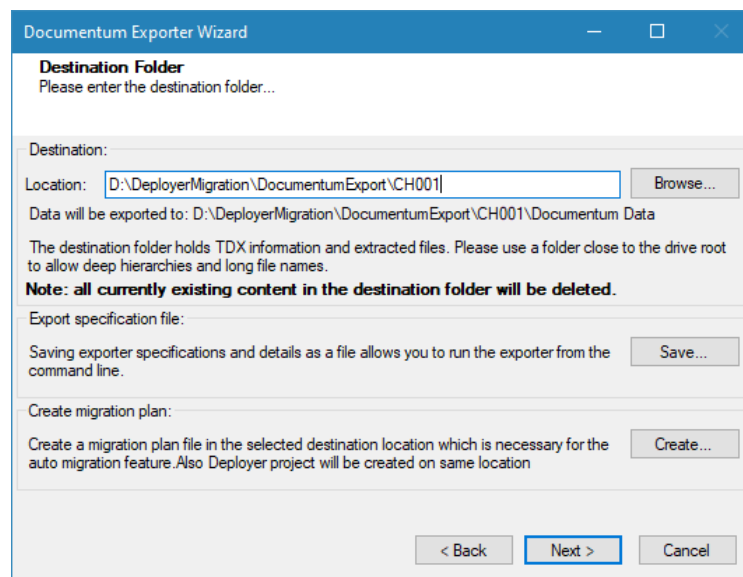


Figure 2-13: Destination Folder Screen

Specify where to export the files and generated TDX information. Make sure you are saving to a folder with a descriptive name and under a well-organized file system

hierarchy. It is recommended to export to a folder that is as close to the root as possible.



When exporting deep hierarchy, the property which store the path for exported folder/files may exceed the maximum character supported by the property (typically 260 characters defined in the Windows API). To overcome such condition, it is recommended to export to a folder that is as close to the root as possible.

Starting in Windows 10, version 1607, MAX_PATH limitations have been removed from common Win32 file and directory functions. Please, refer information published by Microsoft from following link and consult with your system administrator to remove the limitation whenever possible.

<https://docs.microsoft.com/en-us/windows/win32/fileio/maximum-file-path-limitation?tabs=registry>

Click **Save** under **Export specification file** for saving export specification details as an XML file which can be used to run the exporter in command-line mode. See the section '**Command-line Export**' below for more details.

12. Click **Next**.



If the export folder already exists, a warning appears, informing you that the destination folder already exists and if you continue all existing information will be deleted.

Clicking **OK** confirms overwrite and clicking **Cancel** returns you to the Destination Folder screen to change the destination folder.

An Exporting screen appears with a progress bar and execution report, and the export process begins. During the export process, a **Pause** button is displayed. Users can manually pause and resume the export process (despite of scheduled pause/resume time) by clicking on **Pause/Resume** button.

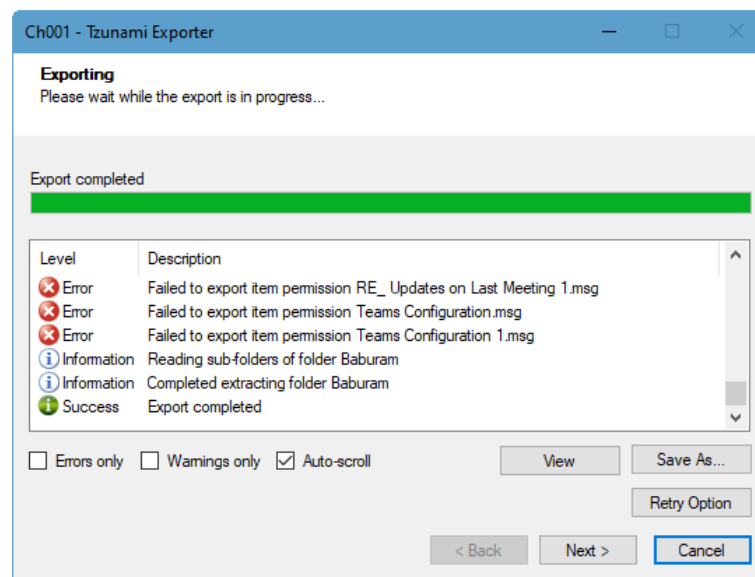


Figure 2-14: Exporter Progress Screen



You can save the export report by clicking **Save As...** after the export is complete.

You can check **Auto-scroll** to display the latest progress messages, as they appear.

You can display only export errors by checking **Errors only**.

You can display only export warnings by checking **Warnings only**.

13. Click **Retry** Option, if there are failed item(s).

14. Click **Next**. The Export Complete screen appears.

15. Click **Done**. The Tzunami Documentum Export wizard is closed.

If the exporter was run from Tzunami Deployer, after the extraction process completes successfully, you are prompted to load the exported data into the current Tzunami Deployer project. Clicking '**Yes**' begins the process of loading the content from the previously exported TDX file into the project. For more information about loading sources, refer to the [Tzunami Deployer User Guide](#).

2.3 COMMAND-LINE EXPORT

Tzunami Exporter for Documentum provides ability to run export sessions non-interactively using command line instructions. This allows administrators to plan and schedule long running migration jobs through scripts, batch files and schedulers according to needs and organizational timetables. To run the exporter in batch mode you will need exporter specification file explained in the 'Choose Destination Folder' step of the export wizard. The file contains all the export option details including:

- Source ECM connectivity information (Server Address, User Name, Password etc.)
- Items to export
- Destination and Log Folder
- Filter
- Exporter specific options

This file can be edited to suit your needs however the XML schema of the file should not be altered. It is recommended that you generate a sample specifications file in the Destination Folder Screen selection step of the export wizard and use it as a template to create your own specification file.

Once the specification file is ready, you can run the exporter from command line using command:

TzunamiExporter.exe [-r <ResultFile>] -s <ExportSpecificationsFile>

Usage

Field	Description
-r	Outputs export results into an XML file [Optional]
-s	XML file containing export specifications

For example:

```
C:\User\Administrator> "C:\Program Files (x86)\Tsunami\Deployer
4.0\Exporters\Documentum\TsunamiExporter.exe" -s "D:\Spec Files\specs1.xml"

C:\Program Files (x86)\Tsunami\Deployer 4.0\Exporters\Documentum>
TsunamiExporter.exe -s "D:\Spec Files\specs1.xml"
```

Based on your needs you can create number of specification files and use them to run multiple export sessions as batch commands.



You will need to provide absolute path for **TsunamiExporter.exe** and **ExportSpecificationsFile** in the command if you are not running from the exporter installation directory.

In Microsoft Windows Server 2003 and Windows Server 2008 environment, if USG (Universal Security Group) is enabled, Users with low privileges sometimes cannot export ECM contents. To export contents using command line, User must run with elevated or administrative privileges.

To export contents with elevated or administrative privileges, you can run the exporter from command line using command:

```
RUNAS /trustlevel: "Unrestricted" "<ExporterInstallationDirectory>\TsunamiExporter.exe"
-s "<Spec file path>\Specfilename.xml" "
```

For example:

```
C:\> RUNAS /trustlevel:"Unrestricted" "C:\Program Files (x86)\Tsunami\Deployer
4.0\Exporters\Documentum\TsunamiExporter.exe " -s "D:\Spec Files\specs1.xml"
```

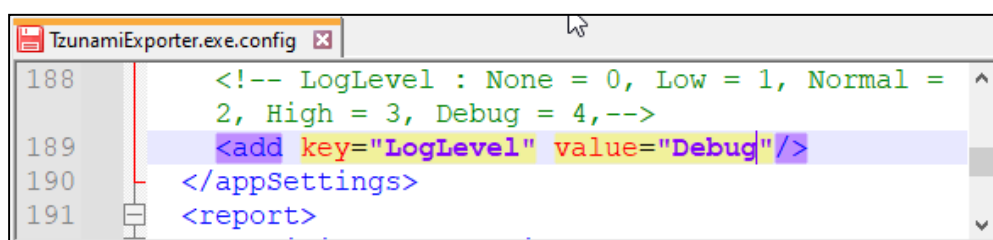
2.4 LOGGING SETTINGS

In Tsunami Exporter, log is written in a persistent medium having as much information as possible about events that occur while the software runs. That information plays a vital role while diagnosing if any issue occurs during the export process. Hence, it is worth mentioning that logger writes each and very details during.

Tsunami Inc provides the settings for writing logs. There are the following log levels that the user can change before running the tool.

1. Go to installation directory of the exporter and open **TsunamiExporter.exe.config** file in an editor.
2. Locate the key and set corresponding values as mentioned below:

- **LogLevel:** Set the esteem to “Debug” or “High” or “Normal” or “low” or “none”.



```

188      <!-- LogLevel : None = 0, Low = 1, Normal =
189      2, High = 3, Debug = 4,-->
190      <add key="LogLevel" value="Debug"/>
191    </appSettings>
    <report>
  
```

Figure 2-15 Log level Settings

- **Debug:** Writes logs as much as possible. So, this setting includes the maximum level of verbosity. By default, the tool is packaged with this setting.
- **High:** Writes logs as much as possible for warnings and errors. However, it will not log possible diagnostic information.
- **Normal:** Writes logs for anticipated errors and warnings.
- **Low:** Critical errors are logged. There will be as low as possible information logged.
- **None:** No such logs are written.

3. Save the file. Then run the exporter.

2.5 BEST PRACTICE

Due to the technological differences between Documentum and SharePoint, the following best practices should be taken into consideration:

- Follow the guidelines below when choosing the target structure.

Table 2-7: Target Structure Guidelines

Documentum Item Type	Relevant SharePoint Types
Cabinet	<ul style="list-style-type: none"> • Site/Site Collection • Document Library
Folder	Folder/Document Library
Document	Document
Virtual Document	<ul style="list-style-type: none"> • Folder • Document Library

3 ANNEX

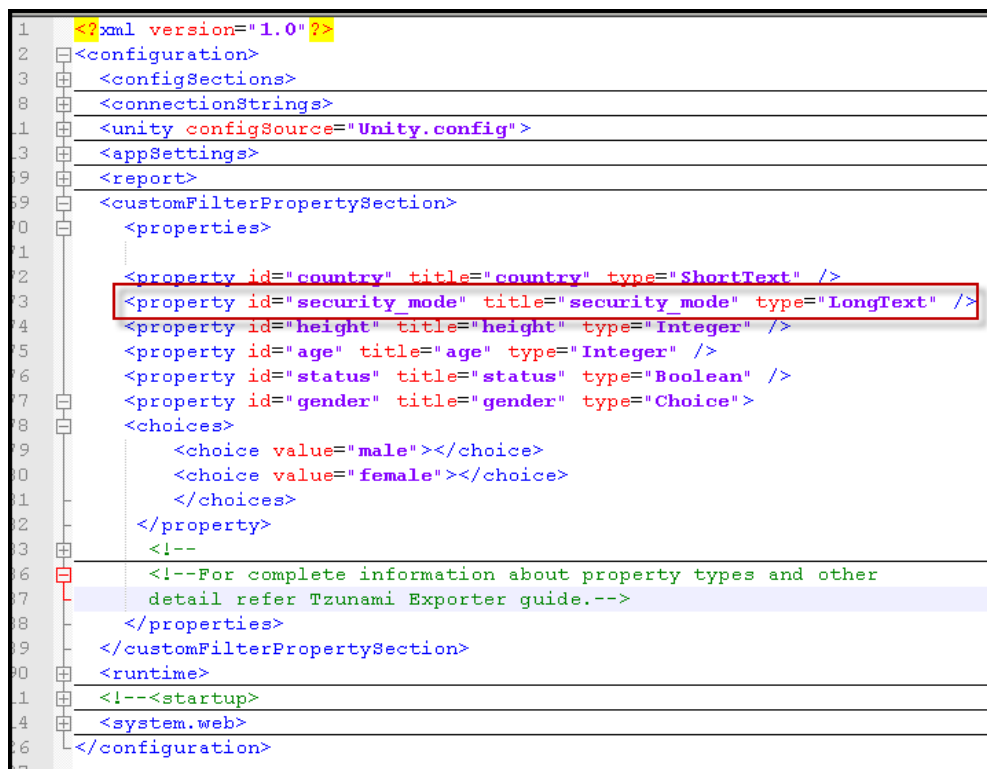
3.1 ADD CUSTOM FILTER PROPERTIES IN TZUNAMI DOCUMENTUM

EXPORTER

You can add custom filter properties in the Tsunami Documentum Exporter using Tsunami Documentum Exporter configuration file (TsunamiExporter.exe.config). A flag 'CustomFilterPropertySection' has been added in the configuration file which allows to add custom filtering properties in the Tsunami Documentum Exporter.

To add custom filter properties

1. Open the Exporter configuration file (TsunamiExporter.exe.config). The exporter configuration file is located at "C:\Program Files\Tsunami\Deployer 4.0\Exporters\Documentum" or where Tsunami Documentum Exporter is installed.
2. In the 'CustomFilterPropertySection' flag, add the property to include in filter screen.



```
1 <?xml version="1.0"?>
2 <configuration>
3   <configSections>
4     <connectionStrings>
5     <unity configSource="Unity.config">
6     <appSettings>
7     <report>
8     <customFilterPropertySection>
9       <properties>
10         <property id="country" title="country" type="ShortText" />
11         <property id="security_mode" title="security_mode" type="LongText" />
12         <property id="height" title="height" type="Integer" />
13         <property id="age" title="age" type="Integer" />
14         <property id="status" title="status" type="Boolean" />
15         <property id="gender" title="gender" type="Choice">
16           <choices>
17             <choice value="male"></choice>
18             <choice value="female"></choice>
19           </choices>
20         </property>
21       </properties>
22       <!--
23       <!--For complete information about property types and other
24       detail refer Tsunami Exporter guide.-->
25     </customFilterPropertySection>
26     <runtime>
27     <!--<startup>
28     <system.web>
29   </configuration>
```

Figure 3-1 Custom Filter Property Settings



Export a small content from Tsunami Documentum Exporter and refer to TDX file to find properties that you want to add as custom filtering properties.

```
<exportData connection="" username="" password="" fullDownload="True" customOptions="" />
<ecm type="Documentum" version="1.0" location="" />
<properties>
  <property id="title" title="Title" type="ShortText" />
  <property id="security_mode" title="security_mode" type="LongText" />
  <property id="r_object_id" title="r_object_id" type="ShortText" />
  <property id="isVirtualDoc" title="IsVirtualDocument" type="Boolean" />
  <property id="folderPath" title="Folder Path" type="LongText" />
  <property id="createdBy" title="Created By" type="User" />
  <property id="modifiedBy" title="Modified By" type="User" />
</properties>
```

Figure 3-2 Custom Property in TDX file.

3. Save the configuration file. The added custom filtering properties will be available in the Filtering Screen.

Documentum Exporter Wizard

Filter
Please set a filter...

Properties:

- Created By
- Format
- Modified
- Modified By
- Object Type
- Owner
- r_object_id
- security_mode**
- State
- State Name
- Subject

Condition:
security_mode

Equals to

Add Condition Clear Condition

Filter:

< Back Next > Cancel

Figure 3-3 Custom Property in Filter Screen

4 COPYRIGHT AND TRADEMARK

© Copyright 2024. Tzunami Inc. All rights reserved.

All intellectual property rights in this publication are owned by Tzunami, Inc. and protected by United States copyright laws, other applicable copyright laws and international treaty provisions. Tzunami, Inc. retains all rights not expressly granted. No part of this publication may be reproduced in any form whatsoever or used to make any derivative work without prior written approval by Tzunami, Inc.

No representation of warranties for fitness for any purpose other than what is specifically stated in this guide is made either by Tzunami, Inc. or by its agents.

Tzunami, Inc. reserves the right to revise this publication, and/or make improvements or changes in the product(s) and/or the program(s) described in this documentation at any time without prior notice.

Any software on removable media described in this publication is furnished under a license agreement included with the product as a separate document. If you are unable to locate a copy, please contact Tzunami, Inc. and a copy will be forwarded to you.

Tzunami is either a registered trademark or a trademark of Tzunami, Inc. in the United States and/or other countries.

All other brand or product names are trademarks or registered trademarks of their respective companies.

For further information, you can contact Tzunami Inc. at:

Tzunami Inc.

601 108th Avenue, NE

Suite 1900

Bellevue, WA 98004, USA

Email: sales@tzunami.com, support@tzunami.com

Web: <http://www.tzunami.com>