



Tsunami Deployer

DocuShare Exporter Guide

Facilitates migration of Xerox DocuShare contents into Microsoft SharePoint

Version 4.0
Last Updated: March 31, 2024

Table of Contents

PREFACE	IV
INTENDED AUDIENCE.....	IV
CONVENTIONS	IV
TECHNICAL SUPPORT.....	V
COMMENTS AND SUGGESTIONS	V
1 INSTALLING TZUNAMI DOCUSHARE EXPORTER.....	1-1
1.1 SYSTEM REQUIREMENTS.....	1-2
1.2 PERMISSION REQUIREMENTS.....	1-2
1.2.1 Connecting DocuShare Server.....	1-2
1.3 INSTALLING TZUNAMI DOCUSHARE EXPORTER	1-3
1.4 CONFIGURATION OF TZUNAMI SERVICE SETTINGS.....	1-6
1.5 UNINSTALL TZUNAMI DOCUSHARE EXPORTER	1-6
1.5.1 Uninstallation using Installer	1-7
1.5.2 Uninstallation using Control Panel.....	1-7
2 TZUNAMI DOCUSHARE EXPORTER	2-8
2.1 OVERVIEW	2-9
2.1.1 Supported Types	2-9
2.1.2 Security	2-10
2.2 EXPORTING FROM XEROX DOCUSHARE.....	2-10
2.3 COMMAND-LINE EXPORT.....	2-24
2.4 LOGGING SETTINGS.....	2-25
2.5 BEST PRACTICE	2-26
3 COPYRIGHT AND TRADEMARK.....	3-28

List of Tables

Table 1-1: System Requirements	1-2
Table 2-1: DocuShare Exporter, Welcome screen - Description of fields	2-11
Table 2-2: DocuShare Configurations Screen, Connection Tab – Description of Fields	2-12
Table 2-3: DocuShare Configurations Screen, General Tab – Description of Fields	2-13
Table 2-4: DocuShare Configurations Screen (Comments) – Description of Fields	2-15
Table 2-5: DocuShare Configurations, Actions Tab - Description of fields	2-18
Table 2-6 Analyzer Information Description	2-20
Table 2-7: Target Structure Guidelines	2-26

List of Figures

Figure 1-1: Welcome Window	1-3
Figure 1-2:End-User License Agreement Window	1-4
Figure 1-3: Custom Setup Window	1-4
Figure 1-4: Installing Tsunami DocuShare Exporter Window	1-5
Figure 1-5: Installation Complete Window	1-5
Figure 1-6 Deployer Settings Manager	1-6
Figure 2-1: DocuShare Exporter Wizard – Welcome screen.....	2-11
Figure 2-2: DocuShare Configurations Screen – Connection Tab	2-12
Figure 2-3: DocuShare Configurations Screen – General Tab.....	2-13
Figure 2-4: DocuShare Configurations Screen – Advanced Tab.....	2-14
Figure 2-5 DocuShare Configurations Screen – Custom Tab	2-17
Figure 2-6: DocuShare Configurations Screen – Actions Tab.....	2-18
Figure 2-7 Analyze Option.....	2-19
Figure 2-8 Analyzer Information	2-19
Figure 2-9 Global ACL Mapping file.....	2-20
Figure 2-10 Folders Selection Screen.....	2-21
Figure 2-11: Filter Screen	2-21
Figure 2-12: Destination Folder Screen	2-22
Figure 2-13: Exporter Progress Screen.....	2-23
Figure 2-14 Log level Settings	2-26

PREFACE

This guide provides installation procedures for Tsunami DocuShare Exporter and detail steps to extract contents from Xerox DocuShare using Tsunami DocuShare Exporter. The guide also describes how to extract contents non-interactive way using command-line instructions and best practice.

This preface contains the following topics.

- *Intended Audience*
- *Conventions*
- *Technical Support*
- *Comments and Suggestions*

INTENDED AUDIENCE

Tsunami DocuShare Exporter Guide is intended for:

- System Administrators who are responsible for exporting Xerox DocuShare contents and setting migration environment using Tsunami Deployer.
- Project Managers and IT Managers who create and regulate usage of Tsunami Deployer and Tsunami DocuShare Exporter.

CONVENTIONS

The following text conventions are used in this document:

- Commands and keywords are given in **boldface**
- Terminal sessions, console screens, or system file names are displayed in `fixed width fonts`



Caution indicates that the described action might result in program malfunction or data loss.



Notes contain helpful suggestions about or references to materials not contained in this manual.



Tips provide information that might help you solve a problem.

TECHNICAL SUPPORT

Before contacting Tsunami Support team, ensure that you are referencing the latest copy of this user guide (Ctrl+Click to follow link) [Tsunami Deployer DocuShare Exporter Guide](#).

For additional information, please contact Tsunami Support Team at support@tsunami.com

COMMENTS AND SUGGESTIONS

Your feedback is important to us and will help us to provide the most accurate and high quality information possible in our documentation. Send us comments or suggestions by email to support@tsunami.com. Be sure to include as much of the following as possible:

- The document title.
- The location that the document was accessed from (either downloaded from Tsunami web site or the Tsunami Deployer User Guide and Tsunami DocuShare Exporter Guide available in Tsunami Deployer).
- The section or chapter number and the original text found in the document.



When you send information to Tsunami Deployer, you grant Tsunami a non-exclusive right to use or distribute the information in any way it believes appropriate without incurring any obligation to you.

1 INSTALLING TZUNAMI DOCUSHARE EXPORTER

This chapter contains information about installing Tzunami DocuShare Exporter. It contains the following topics:

- *System Requirements*
- *Permission Requirements*
- *Installing Tzunami DocuShare Exporter*
- *Uninstall Tzunami DocuShare Exporter*

1.1 SYSTEM REQUIREMENTS

The following requirements must be met in order to use Tsunami DocuShare Exporter:

Table 1-1: System Requirements

Components	Minimum Requirements
Computer and processor	2GHz Pentium processor or equivalent
Memory	2 GB (Minimum); 4GB (Recommended)
Hard disk	50Mb (additional space will be required for the Tsunami Deployer projects, which may vary from 10 Mb to 4 GB).
Supported Operating System	Windows Server 2000/2003/2008/2012, Windows XP, Windows Vista, Windows 7, Windows 8 & Windows 10.
Supported Architectures	x86 and x64
Network	Intranet/Internet access depending on connectivity requirements
Display	800 x 600, 256 colors (minimum); 1024 x 768 high color, 32-bit (recommended)
Microsoft .NET Framework	Microsoft .Net Framework 2.0
Additional Requirements	DocuShare server configured and running

1.2 PERMISSION REQUIREMENTS

1.2.1 Connecting DocuShare Server

For connecting to DocuShare server using Tsunami DocuShare Exporter, User should be member of DocuShare Server.

1.3 INSTALLING TZUNAMI DOCUSHARE EXPORTER

Tsunami DocuShare Exporter requires that the latest version of the DocuShare Client to be installed and configured on the machine where the exporter is running. The latest version of the DocuShare Client can be downloaded from the Xerox DocuShare website, at <http://docushare.xerox.com>

To install Tsunami DocuShare Exporter:

1. Unzip the zip file, and run `TsunamiDocuShareExporter.msi`. The Tsunami DocuShare Exporter setup wizard (Welcome window) will launch. To advance through the install wizard, click **Next** on the bottom of the window.

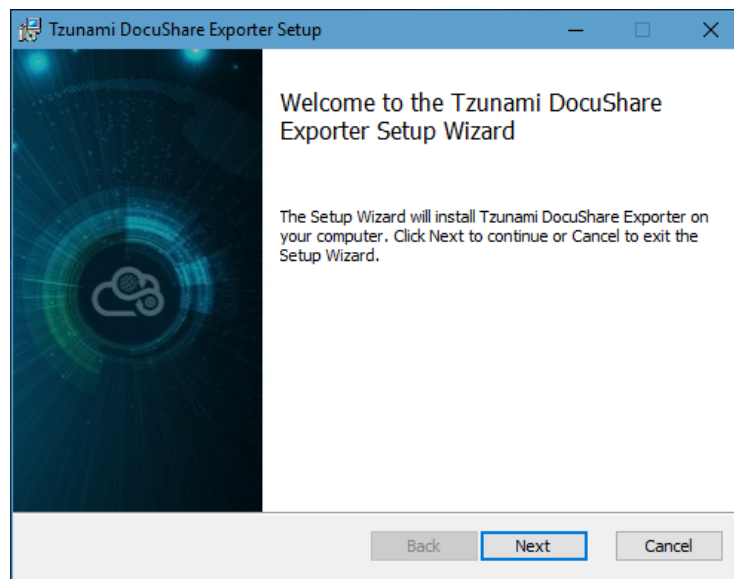


Figure 1-1: Welcome Window

2. In the End-User Licensing Agreement panel, click **"I accept the terms in the License Agreement"** and click **Next** to continue installation.

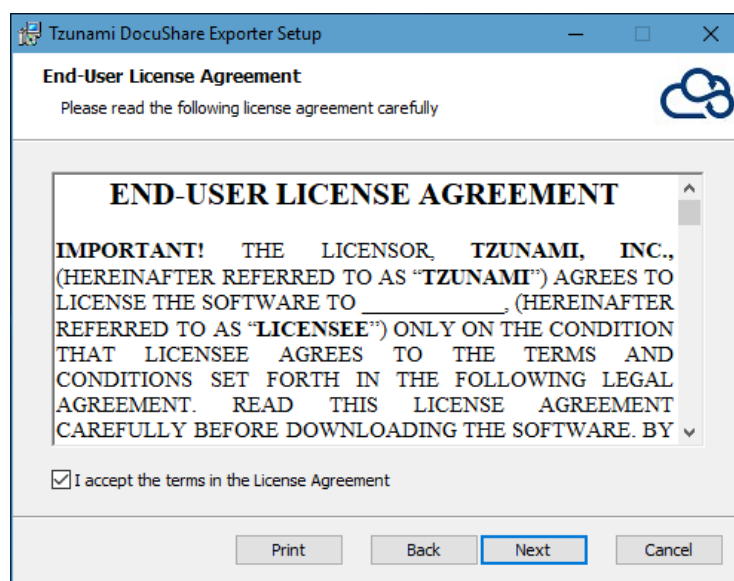


Figure 1-2:End-User License Agreement Window



You are advised to read the terms of the license carefully before proceeding with the installation. If you decline the license terms, the installation cannot proceed.

3. In the Custom Setup panel, do one of the following:
 - To accept the default Destination Folder, click **Next**.
 - Click **Browse**, locate and select a destination folder, click **OK**, and then click **Next**.

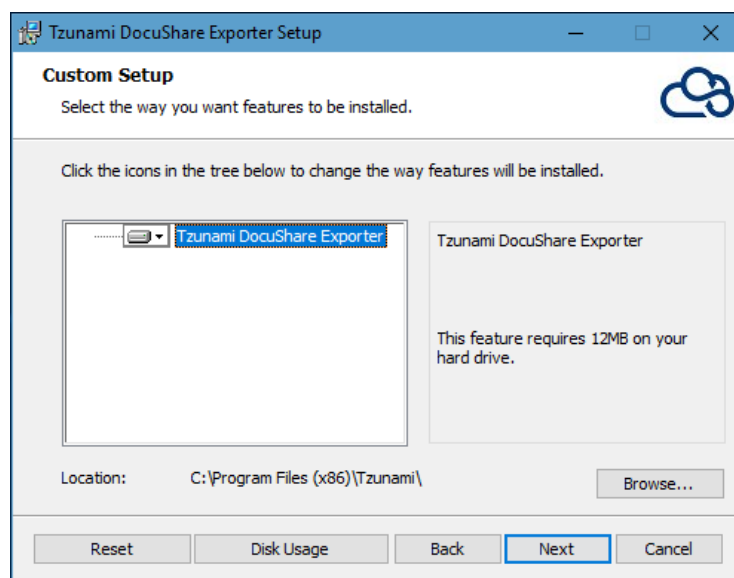


Figure 1-3: Custom Setup Window

4. In the Ready to install Tzunami DocuShare Exporter panel, click **Install**.

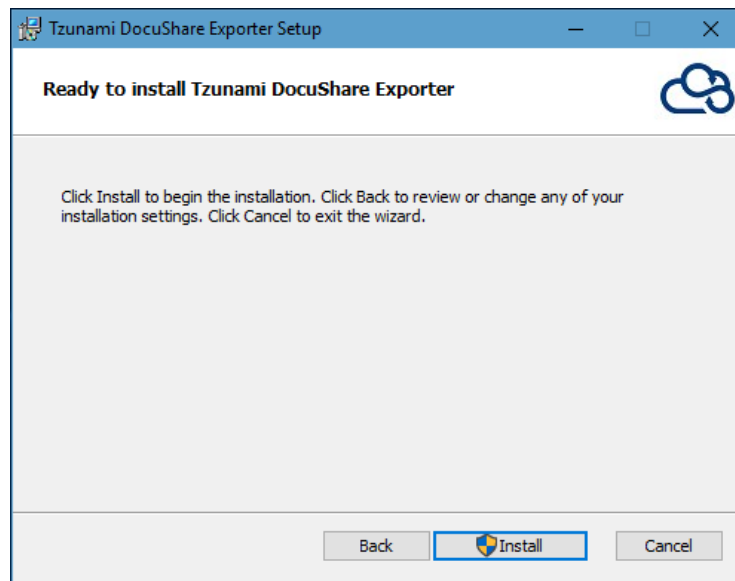


Figure 1-4: Installing Tzunami DocuShare Exporter Window

5. In the Completed Tzunami DocuShare Exporter Setup Wizard, to exit the wizard, click **Finish**.

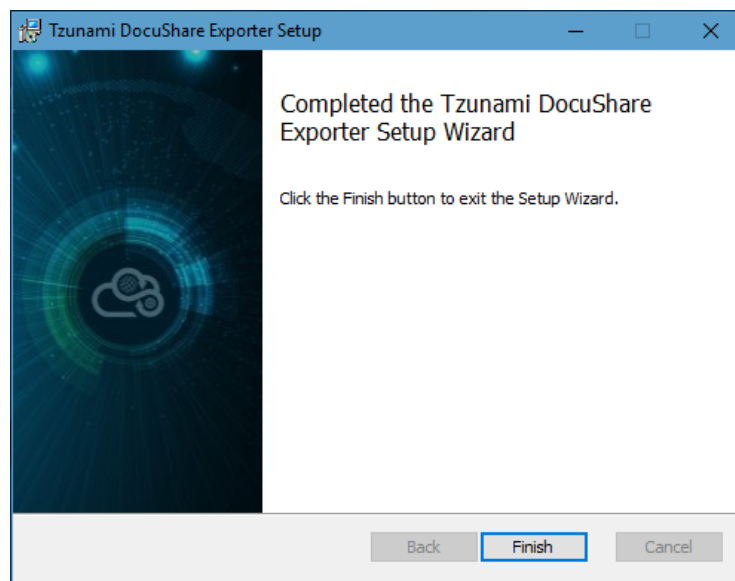


Figure 1-5: Installation Complete Window



When Tzunami DocuShare Exporter is installed, it comes with a default license that can be used for evaluation purpose only. This license is limited in time and number of operations.

1.4 CONFIGURATION OF TZUNAMI SERVICE SETTINGS

1. When installing **Tsunami Deployer/Exporter/Remote Service** for the first time, a **Tsunami Service Settings** dialog is displayed. In **Tsunami Service Settings**, the Licensing Service, Link Resolver Service and O365 AD Service are pointed to localhost (same machine).

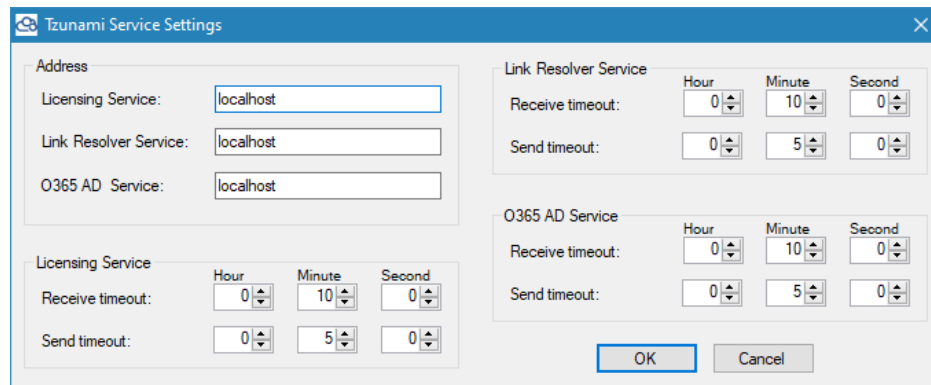


Figure 1-6 Deployer Settings Manager



User can run the **Settings Manager.exe** application from the installation directory to display this service settings dialog at any time and updated the settings to point the Tsunami services as required.

In case of Remote Service installation, restart the Tsunami Remote Service after updating the Tsunami Service Settings.

If these services are installed in other machine, point to that machine with machine name or IP Address.

2. Click on **OK**.

1.5 UNINSTALL TZUNAMI DOCUSHARE EXPORTER

This section of the guide illustrates different ways to remove or uninstall Tsunami DocuShare Exporter from your DocuShare Server. Here are the two different ways to uninstall Tsunami DocuShare Exporters:

- Uninstallation using Installer
- Uninstallation using Control Panel

To uninstall Tsunami DocuShare Exporter, user needs to be a Local Administrator in the DocuShare Exporter installed machine. Uninstalling Tsunami DocuShare Exporter is simple and easy. You can remove or uninstall it in no time. You don't need to reboot your computer once the uninstalling process is complete.



Log files, licensing information files etc. will remain after uninstalling Tsunami DocuShare Exporter. You can manually delete those files from your computer if needed. By default logs are located at the "C:\Program Files\Tsunami\Deployer 4.0\Exporter\Logs", or where

Tsunami DocuShare Exporter is installed. Tsunami DocuShare Exporter Options information will be available in "C:\Documents and Settings\All users\Application Data\Local\Tsunami" location.

1.5.1 Uninstallation using Installer

To uninstall Tsunami DocuShare Exporter using Installer

1. Close **Tsunami DocuShare Exporter**.
2. Unzip the zip file, and run `TsunamiDocuShareExporter.msi`. The Tsunami DocuShare setup wizard (Welcome window) will launch. To advance through the remove installation wizard, click "**Next**" at the bottom of the screen.
3. In the Change, repair or remove installation panel, click "**Remove**" button to proceed to remove Tsunami DocuShare Exporter from your computer.
4. In the Ready to remove Tsunami DocuShare Exporter panel, click "**Remove**" to remove Tsunami DocuShare Exporter from your computer.
5. Click **Finish** to exit the setup wizard.

1.5.2 Uninstallation using Control Panel

To uninstall Tsunami DocuShare Exporter using Control Panel

1. Close **Tsunami DocuShare Exporter**.
2. Click **Start > Control Panel > Add or Remove Programs**.
3. In Add or Remove Programs window, right-click the Tsunami DocuShare Exporter application you want to remove, and then click **Uninstall**.

2 TZUNAMI DOCUSHARE EXPORTER

This chapter contains information about Tzunami DocuShare Exporter. It contains the following topics:

- *Overview*
- *Exporting from Xerox DocuShare*
- *Command-line Export*
- *Logging settings*
- *Best Practice*

2.1 OVERVIEW

Xerox DocuShare is a web-based application that allows you to manage electronic contents. It provides document management, collaboration, image capture, and Web publishing capabilities to support ad hoc information sharing across the enterprise.

Tsunami DocuShare Exporter enables migrating Xerox DocuShare Web-based contents into SharePoint 2007, SharePoint 2010, SharePoint 2013, SharePoint 2016, SharePoint 2019 or SharePoint Online using Tsunami Deployer.

To load DocuShare content into Tsunami Deployer, you must first extract the content, using Tsunami DocuShare Exporter, into TDX (Tsunami Deployer Export) and STDX (Separate Tsunami Deployer Export) files. You can then load this TDX file into a Deployer project.



When working with Tsunami Deployer on several machines, you can run an export on one machine and load the exported data on another.

Tsunami DocuShare Exporter is an extension module of Tsunami Deployer. You can work with this module independently of Tsunami Deployer. See Tsunami Deployer User Guide for more details about Tsunami Deployer.

2.1.1 Supported Types

The following items are exported from DocuShare:

- Workspaces
- Collections
- Calendars and Events
- Bulletin Boards, Topics and Replies
- Weblogs and Weblog Entries
- Documents
- URLs
- Mail Messages
- Wiki



You can also export custom objects from DocuShare.

2.1.2 Security

In addition to the structure and items, Tsunami DocuShare Exporter extracts security information. The following permissions are used in the exporter:

- Reader
- Writer
- Manager
- None

Each item is assigned an ACL defining the permissions of the various members according to the roles they were assigned.



The exporter automatically creates four default roles that are used during the deployment process. The roles include Reader (Read permission), Writer (Reader and Writer permissions), and Manager (Reader, Writer and Manager Permissions).

2.2 EXPORTING FROM XEROX DOCUSHARE

The Tsunami DocuShare Exporter enables you to export DocuShare contents to a TDX file.



When exporting, keep the following in mind:

Export in small chunks: When exporting from your source system, perform the export in small chunks of about 40K-50K files each that have a common business logic or some other logic.

Ensure consistency: Make sure that the content of the different exports does not overlap and that, while exporting, no changes are made to the source data.

To export to a TDX file:

1. In Tsunami Deployer, Right-Click in the DocuShare tab source store area and select **Export DocuShare to TDX**.

Or


Click **Start > All Programs > Tsunami > Tsunami DocuShare Exporter**

The Welcome screen of the Export Wizard appears.



Figure 2-1: DocuShare Exporter Wizard – Welcome screen

Table 2-1: DocuShare Exporter, Welcome screen - Description of fields

Fields	Description
Extract files into file system (otherwise files will be extracted during commit)	<p>Check this option if you wish to download the binary files from DocuShare server to the file system and store them in the FileStore folder, in the same location as the TDX file.</p> <p>If this option is unchecked, no files are downloaded at the export stage. The files are only downloaded when they are needed, in the commit stage.</p> <p> To download files from DocuShare server during commit stage, you must install Tsunami DocuShare Exporter on the Tsunami Deployer installed machine.</p>




2. Click **Next**. The DocuShare Configurations screen appears. Use this screen to enter connection settings required to connect to DocuShare Server. The screen includes three tabs: Connection, General, and Advanced.

a. Connection Tab

The **Connection** tab allows you to enter the information required for connecting to the DocuShare Server.

Figure 2-2: DocuShare Configurations Screen – Connection Tab

Table 2-2: DocuShare Configurations Screen, Connection Tab – Description of Fields




Field	Description
Connection settings	
Server address	Enter the URL of the DocuShare Server. For example, http://DocuShare:8080/docushare/dsweb  User must ensure the valid address oneself. Invalid address will result incorrect resolved links in target and problematic migration reports.
Username	Enter the username to use when connecting to DocuShare Server.  User must be a member of selected domain as mentioned below.
Password	Enter the password of the user
Domain	Select the Domain to connect to. The user supplied above must be a member of this domain. Click Refresh Domain to view the list of available Domains configured in the DocuShare server.
Proxy settings	
User Proxy	Check this option if you wish to use a proxy server to access DocuShare.  You will need to provide the address of the proxy server if you select this option.
Address	Enter Proxy Server address.

b. General Tab

The **General** tab allows you to select the item types and item versions that you wish to migrate from DocuShare server.

Figure 2-3: DocuShare Configurations Screen – General Tab

Table 2-3: DocuShare Configurations Screen, General Tab – Description of Fields

Field	Description
Versions	
Export Versions	<p>Check this option if you wish to export all versions of items.</p> <p> Uncheck this option, if you wish to export current versions of each item.</p>
Max number of versions	<p>Enter the number of versions you would like to export for each item.</p> <p> Setting this value to zero will export all versions.</p> <p>If number of maximum versions is specified, number of versions from latest version are exported.</p>
Create Document name from	<p>Tsunami DocuShare Exporter allows the user to export the documents, with filenames based on their Initial, Preferred or Last Version. User need to select one of the following options to perform this action.</p> <p> DocuShare Server supports same/unique filenames as well as same/unique file types while uploading versions to a document.</p> <p>However, Microsoft SharePoint does not support different file name and type while creating document version for a document. Hence, in case of conflicts in file types, user can change the name or file type of the file in question according to the 'File Name' property in Source, after they migrate it to the Target SharePoint.</p>
Initial Version(Original)	Select this option to export File Names of all versions of the file based on its Initial Version.

Field	Description
Preferred Version	Select this option to export File Names of all versions of the file based on its Preferred Version.
Latest Version (Latest)	Select this option to export File Names of all versions of the file based on its Last Version.
Export	
Workspaces	Check this option if you wish to export Workspaces from DocuShare.
Collections	Check this option if you wish to export Collections from DocuShare.
Documents and Documents Comments	Check this options if you wish to export Documents and Document Comments from DocuShare.
Weblogs and Weblog Comments	Check this options if you wish to export Weblogs and Weblog Comments from DocuShare.
Discussions	Check this option if you wish to export Discussions from DocuShare.
Calendars	Check this option if you wish to export Calendars from DocuShare.
Mail Messages	Check this option if you wish to export Mail Messages from DocuShare.
Wiki	Check this option if you wish to export Wikis from DocuShare.
URL	Check this option if you wish to export URL from DocuShare.
Custom Properties	Check this option if you wish to export custom properties of the objects from DocuShare.

c. Advanced tab

The **Advanced** tab allows you to specify the export options such as security, Wiki Page, mail items and mail messages from DocuShare Server. You can specify how to export Containers and Items from DocuShare.

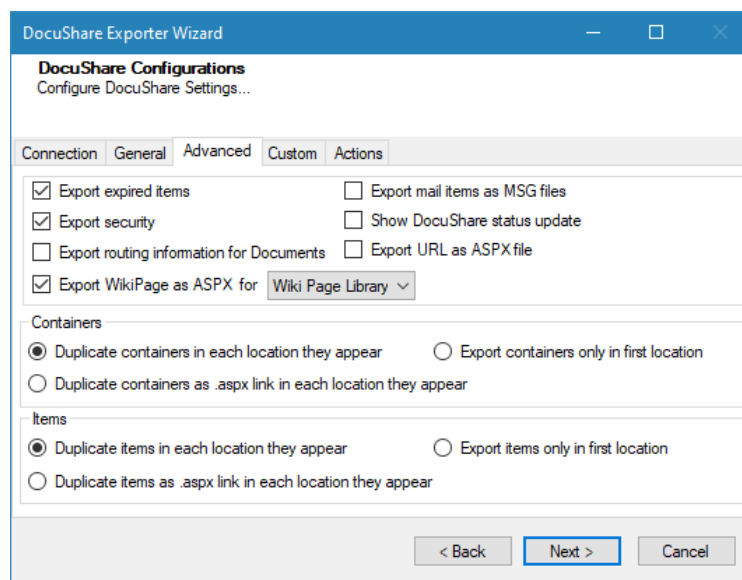

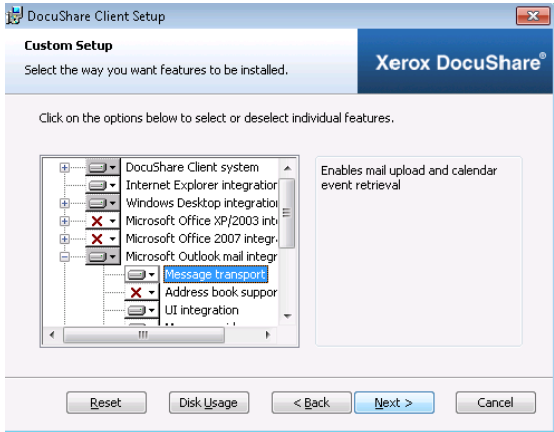





Figure 2-4: DocuShare Configurations Screen – Advanced Tab

Table 2-4: DocuShare Configurations Screen (Comments) – Description of Fields

Field	Description
Export expired items	Check this option if you wish to export items that are marked as expired in DocuShare.
Export mail items as MSG files	<p>Check this option if you wish to export Mail Messages from DocuShare.</p> <p> The following application must be installed on the machine that is used to run the Tsunami DocuShare Exporter to export mail messages as MSG File:</p> <ul style="list-style-type: none"> • Microsoft Office Outlook • DocuShare Client • DocuShare Outlook Client <p>You must create a server map in the DocuShare client to point to the DocuShare Server for this feature to work. To extract Mail Messages as MSG files, you must install Message Transport module when installing DocuShare client.</p> 
Export security	Check this option if you wish to export security details of the various items.
Show DocuShare status update	Check this option if you wish to display DocuShare status update

Field	Description
Export routing information for Documents	<p>Check this option if you wish to export routing information for Documents.</p> <p> Exporting of routing information is resource intensive. Therefore, it is recommended that this option is checked only if routing is enabled in the source and the information needs to be extracted.</p>
Export URL as ASPX file	Check this option if you wish to export URL as ASPX file.
Export Wiki Page as ASPX file	Check this option if you wish to export Wiki page as ASPX for Wiki Page Library or Page Library.
Containers	<p>Specify how to export containers from DocuShare.</p> <ul style="list-style-type: none"> • Duplicate containers in each location they appear • Export containers only in first location. • Duplicate items as .aspx link in each location they appear. <p> DocuShare containers can be located in more than one location, but SharePoint does not support this behavior. You can specify whether to export such containers only once (in the first parent it appears in), or to duplicate them in each location in which they appear.</p>
Items	<p>Specify how to export items from DocuShare.</p> <ul style="list-style-type: none"> • Duplicate items in each location they appear • Export items only in first location • Duplicate items as .aspx link in each location they appear. <p> DocuShare items can be located in more than one location, but SharePoint does not support this behavior. You can specify whether to export such items only once (in the first parent it appears in), or to duplicate them in each location in which they appear.</p>

d. Custom tab

The **Custom** tab allows you to use the additional capabilities.

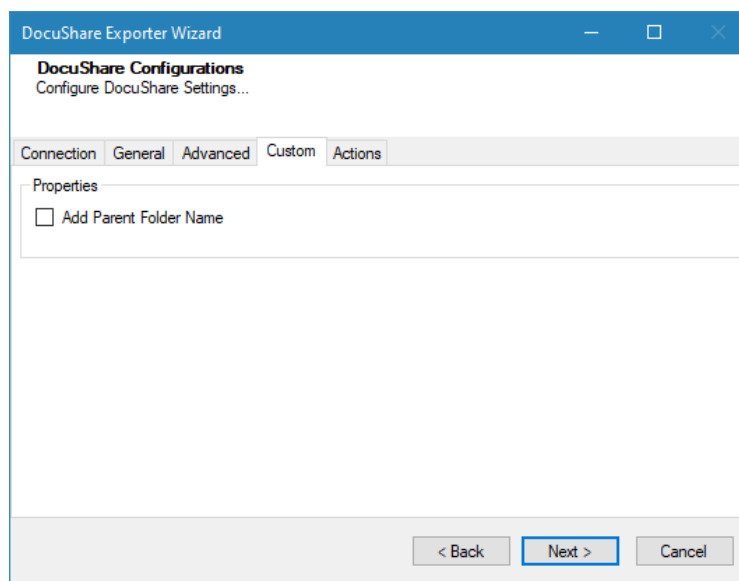


Figure 2-5 DocuShare Configurations Screen – Custom Tab

Add Parent Folder Name: If this option is checked, immediate parent folder name will be add as property in respective document and folder. The added property helps to identify the parent folder of documents while deploying content during migration process in Tzunami Deployer.

e. Actions tab

The **Actions** tab allows you to use different actions that can be taken in the exporter.

- **Auto Pause:** The export process is paused and resumed using this functionality at a set time each day. The feature can be turned on or off using the **Use Auto Pause** check box. The feature can be checked by the user, who can also select the pause and resume times. The user can deselect it to turn off the feature.

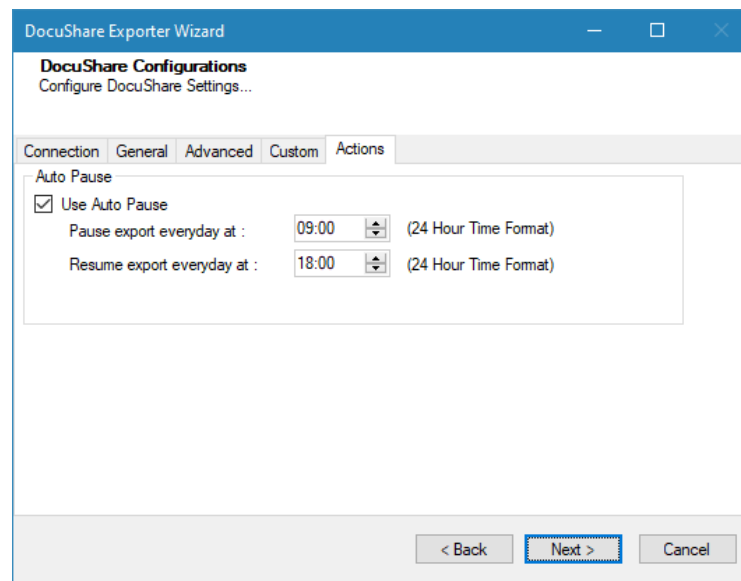


Figure 2-6: DocuShare Configurations Screen – Actions Tab

Table 2-5: DocuShare Configurations, Actions Tab - Description of fields

Field	Description
Auto Pause	
Use Auto Pause	To use the auto-pause and resume feature, select this option. To turn off this function, uncheck this box.
Pause export every day at	Set the daily time that the export process should pause.
Resume export every day at	Set the daily time for restarting the interrupted export operation.

The settings for actions are only applied to this exporter instance that is currently executing when the user clicks the **Next** button.

3. Click **Next**. The Folders screen appears.

Tsunami Exporter provides quick analysis option before exporting to know the size, count of contents inside selected folder.

If you want to analyze the content: Check on the Folder(s) in tree view, then **Analyze** button is enabled. Click **Analyze**.

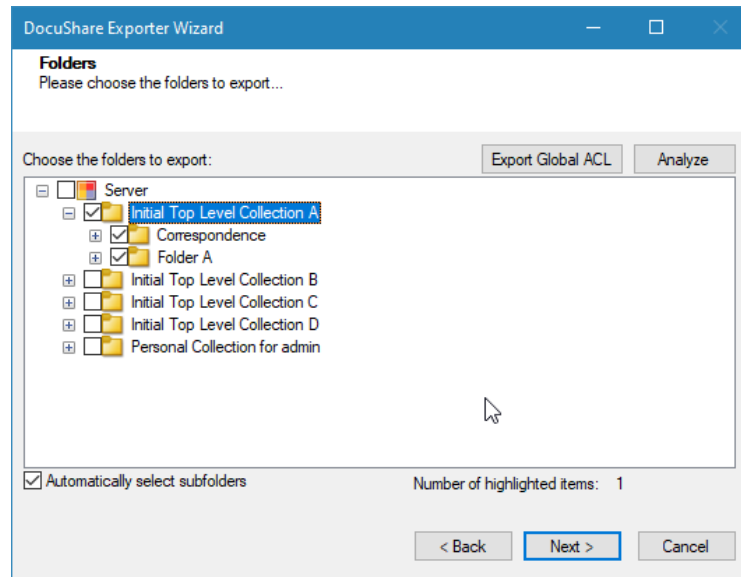


Figure 2-7 Analyze Option



Please, provide the database connection settings prior to perform the content analysis. Refer **DB Settings tab** section.

Analyzer screen appears. Analyzer screen provides the detail information that helps to plan for the export (chunk size) based on File size and number of items.

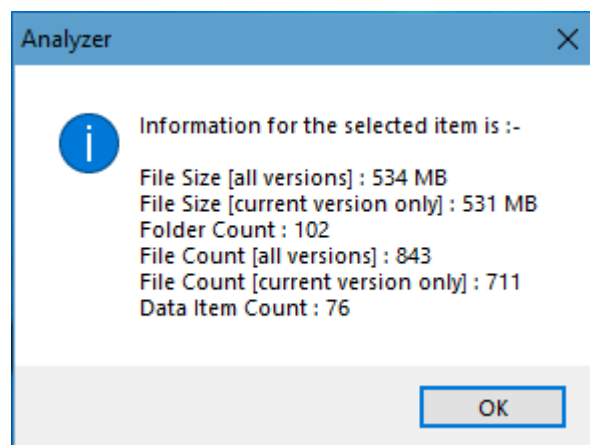


Figure 2-8 Analyzer Information

Table 2-6 Analyzer Information Description

Field	Description
File Size [all versions]	Provides the total size of files for all versions of documents.
File Size [current version only]	Provides the total size of files for current version of documents.
Folder Count	Provides the number of folders.
File Count [all versions]	Provides the total number of files for all versions of documents.
File Count [current version only]	Provides the total number of files for current versions of documents.
Data Item Count	Provides the total number of data item.

You can export the Roles, Groups and Users in a file by clicking on **Export Global ACL** button. A progress bar appears while exporting the information. The file is by default exports to:

Location: C:\ProgramData\Tsunami\GlobalAclexport\DocuShare

File Name: global_acl.xml

This file is used in Tsunami Deployer when using Global ACL Mapping. Refer **Deployer User Guide's** section **Global ACL Mapping** for more details.

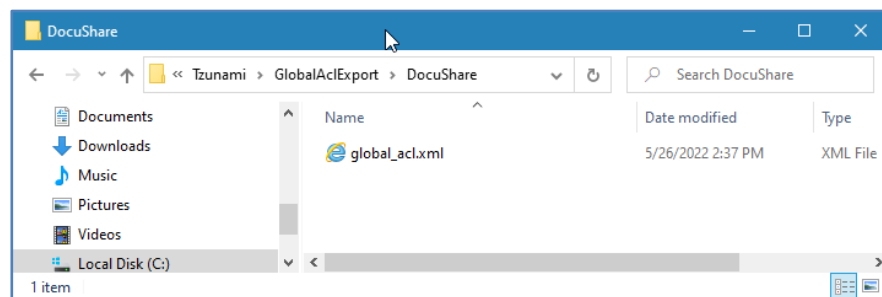


Figure 2-9 Global ACL Mapping file

4. Select folders to export.

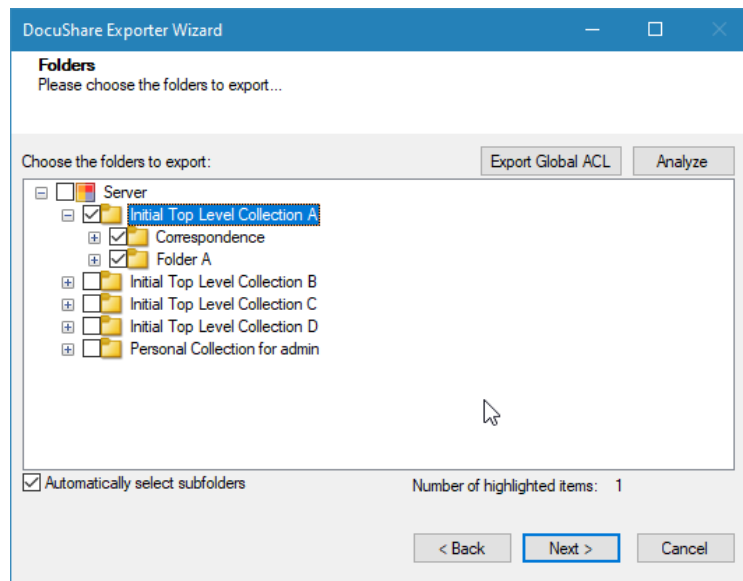


Figure 2-10 Folders Selection Screen



You can select all subfolders of a selected folder by checking 'Automatically select subfolders'.

5. Click **Next**. The Filter screen appears.

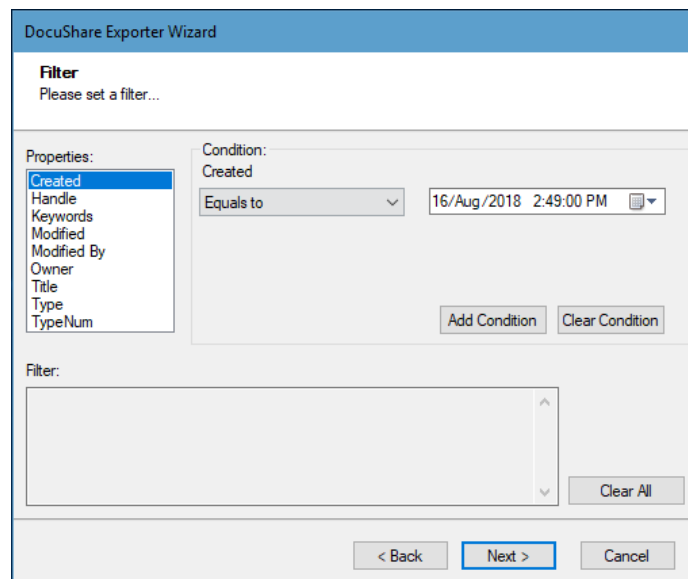


Figure 2-11: Filter Screen

6. Set up filtering as follows:
 - a) In the Properties field, select a property.
 - b) In the Condition field, select a condition from the dropdown list and enter or select values in the corresponding field.

- c) Click **Add Condition**. The condition is added to the Filter area, displaying the full filter expression.



You can only add one condition per property.

You can edit a condition for a property by selecting the property and modifying the condition type or values that are currently assigned to it.

You can remove a condition from a property or all the conditions from all the properties by clicking **Clear Condition** or **Clear All**, respectively.

This option works only for Data Items.

If multiple conditions are applied, only items that match all conditions are exported.

While adding filter condition for a document using the *Handle* property, you have to use 'File' (**For e.g.** File - 1234) instead of 'Document' (**For e.g.** Document - 1234).

7. Click **Next**. The Destination Folder screen appears.

Figure 2-12: Destination Folder Screen

Specify where to export the files and generated TDX information. Make sure you are saving to a folder with a descriptive name and under a well-organized file system hierarchy. It is recommended to export to a folder that is as close to the root as possible.



When exporting deep hierarchy, the property which store the path for exported folder/files may exceed the maximum character supported by the property (typically 260 characters defined in the Windows API). To overcome such condition, it is recommended to export to a folder that is as close to the root as possible.

Starting in Windows 10, version 1607, MAX_PATH limitations have been removed from common Win32 file and directory functions. Please, refer information published by Microsoft from following link and consult with your system administrator to remove the limitation whenever possible.

<https://docs.microsoft.com/en-us/windows/win32/fileio/maximum-file-path-limitation?tabs=registry>

Click **Save** under **Export specification file** for saving export specification details as an XML file which can be used to run the exporter in command-line mode. See the section '**Command-line Export**' below for more details.

8. Click **Next**.



If the export folder already exists, a warning appears, informing you that the destination folder already exists and if you continue all existing information will be deleted.

Clicking **OK** confirms overwrite and clicking **Cancel** returns you to the Destination Folder screen to change the destination folder.

An Exporting screen appears with a progress bar and execution report, and the export process begins. During the export process, a **Pause** button is displayed. Users can manually pause and resume the export process (despite of scheduled pause/resume time) by clicking on **Pause/Resume** button.

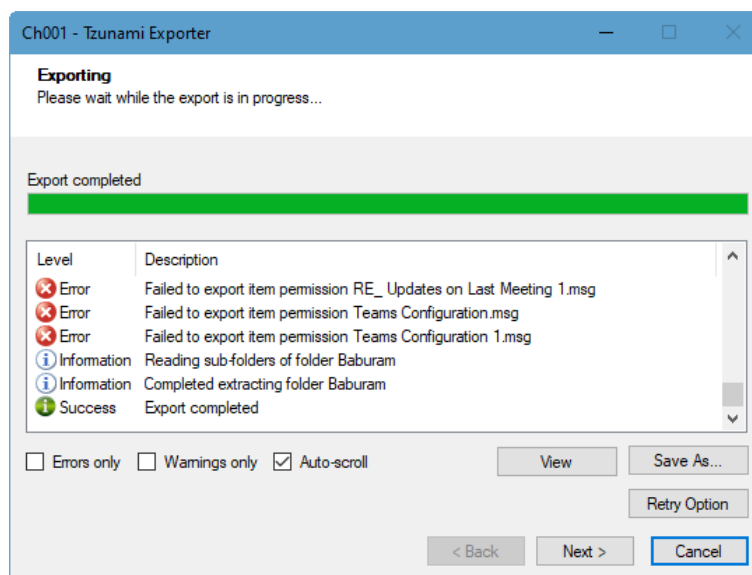


Figure 2-13: Exporter Progress Screen



You can save the export report by clicking **Save As...** after the export is complete.

You can check **Auto-scroll** to display the latest progress messages, as they appear.

You can display only export errors by checking **Errors only**.

You can display only export warnings by checking **Warnings only**.

9. Click **Retry Option**, if there are failed item(s).
10. Click **Next**. The Export Complete screen appears.

11. Click **Done**. The DocuShare Export wizard is closed.

After the extraction process completes successfully, you are prompted to load the exported data into the current Tzunami Deployer project if you are running the exporter from the Deployer. Clicking '**Yes**' begins the process of loading the content from the previously exported TDX file into the project. If you are running the exporter separately to export contents, you can load the exported TDX later into a Deployer project. For more information about loading sources, refer to the [Tzunami Deployer User Guide](#).

2.3 COMMAND-LINE EXPORT

Tzunami Exporter for DocuShare provides ability to run export sessions non-interactively using command line instructions. This allows administrators to plan and schedule long running migration jobs through scripts, batch files and schedulers according to needs and organizational timetables. To run the exporter in batch mode you will need exporter specification file explained in the 'Choose Destination Folder' step of the export wizard. The file contains all the export option details including:

- Source ECM connectivity information (Server Address, User Name, Password etc.)
- Items to export
- Destination and Log Folder
- Filter
- Exporter specific options

This file can be edited to suit your needs however the XML schema of the file should not be altered. It is recommended that you generate a sample specifications file in the Destination Folder Screen selection step of the export wizard and use it as a template to create your own specification file.

Once the specification file is ready, you can run the exporter from command line using command:

TzunamiExporter.exe [-r <ResultFile>] -s <ExportSpecificationsFile>

Usage

Field	Description
-r	Outputs export results into an XML file [Optional]
-s	XML file containing export specifications

For example:

```
C:\User\Administrator> "C:\Program Files (x86)\Tzunami\Deployer 4.0\Exporters\DocuShare  
TzunamiExporter.exe" -s "D:\Spec Files\specs1.xml"
```

```
C:\Program Files (x86)\Tsunami\Deployer 4.0\Exporters\DocuShare> TsunamiExporter.exe -s "D:\Spec Files\specs1.xml"
```

Based on your needs you can create number of specification files and use them to run multiple export sessions as batch commands.



You will need to provide absolute path for **TsunamiExporter.exe** and **ExportSpecificationsFile** in the command if you are not running from the exporter installation directory.

In Microsoft Windows10, Windows 8, Windows 7, Windows Vista, Windows Server 2003 and Windows Server 2008 environment, if USG (Universal Security Group) is enabled, Users with low privileges sometimes cannot export ECM contents. To export contents using command line, User must run with elevated or administrative privileges.

To export contents with elevated or administrative privileges, you can run the exporter from command line using command:

```
RUNAS /trustlevel:"Unrestricted" "<ExporterInstallationDirectory>\TsunamiExporter.exe -s \"<Spec file path>\Specfilename.xml \" "
```

For example: RUNAS /trustlevel:"Unrestricted" "C:\Program Files (x86)\Tsunami\Deployer 4.0\Exporters\DocuShare\TsunamiExporter.exe -s "D:\Spec Files\specs1.xml\" "

2.4 LOGGING SETTINGS

In Tsunami Exporter, log is written in a persistent medium having as much information as possible about events that occur while the software runs. That information plays a vital role while diagnosing if any issue occurs during the export process. Hence, it is worth mentioning that logger writes each and very details during.

Tsunami Inc provides the settings for writing logs. There are the following log levels that the user can change before running the tool.

1. Go to installation directory of the exporter and open **TsunamiExporter.exe.config** file in an editor.
2. Locate the key and set corresponding values as mentioned below:
 - **LogLevel:** Set the esteem to "Debug" or "High" or "Normal" or "low" or "none".

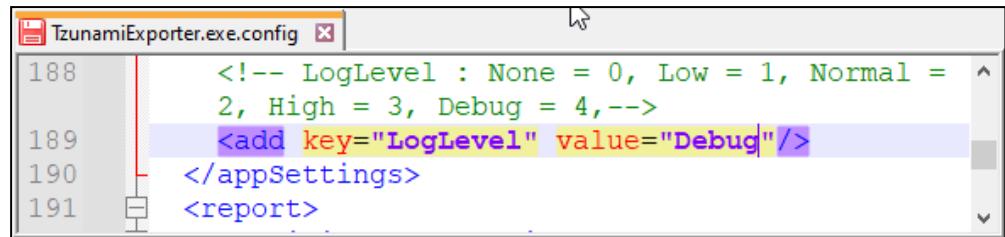


Figure 2-14 Log level Settings

- **Debug:** Writes logs as much as possible. So, this setting includes the maximum level of verbosity. By default, the tool is packaged with this setting.
- **High:** Writes logs as much as possible for warnings and errors. However, it will not log possible diagnostic information.
- **Normal:** Writes logs for anticipated errors and warnings.
- **Low:** Critical errors are logged. There will be as low as possible information logged.
- **None:** No such logs are written.

3. Save the file. Then run the exporter.

2.5 BEST PRACTICE

Due to the technological differences between and SharePoint, the following best practices should be taken into consideration:

- Follow the guidelines below when choosing the target structure.

Table 2-7: Target Structure Guidelines

DocuShare Item Type	Relevant SharePoint Types
Workspaces	<ul style="list-style-type: none"> • Web Application (create manually in SharePoint). • Site Collection
Collection	<ul style="list-style-type: none"> • Site Collection/Site • Document Library
Calendar	Calendar
Events	Calendar Items
Bulletin Boards, Topics and Replies	<ul style="list-style-type: none"> • Discussion • Discussion Messages
Weblogs and Weblog Entries	<ul style="list-style-type: none"> • Post • Comments
Documents	Document Library
URLs	Data Items

Mail Messages	<ul style="list-style-type: none">• Document Library(MSG files)• Generic (Custom) List (data-items with attachments).
Wiki	<ul style="list-style-type: none">• Wiki Page Library• Page Library

3 COPYRIGHT AND TRADEMARK

© Copyright 2024. Tzunami Inc. All rights reserved.

All intellectual property rights in this publication are owned by Tzunami, Inc. and protected by United States copyright laws, other applicable copyright laws and international treaty provisions. Tzunami, Inc. retains all rights not expressly granted. No part of this publication may be reproduced in any form whatsoever or used to make any derivative work without prior written approval by Tzunami, Inc.

No representation of warranties for fitness for any purpose other than what is specifically stated in this guide is made either by Tzunami, Inc. or by its agents.

Tzunami, Inc. reserves the right to revise this publication, and/or make improvements or changes in the product(s) and/or the program(s) described in this documentation at any time without prior notice.

Any software on removable media described in this publication is furnished under a license agreement included with the product as a separate document. If you are unable to locate a copy, please contact Tzunami, Inc. and a copy will be forwarded to you.

Tzunami is either a registered trademark or a trademark of Tzunami, Inc. in the United States and/or other countries.

All other brand or product names are trademarks or registered trademarks of their respective companies.

For further information, you can contact Tzunami Inc. at:

Tzunami Inc.

601 108th Avenue, NE

Suite 1900

Bellevue, WA 98004, USA

Email: sales@tzunami.com, support@tzunami.com

Web: <http://www.tzunami.com>