

# WHITE PAPER



## SharePoint 2003 Migration to MOSS with Tsunami Deployer for SPS 2003 Migration



---

All concepts, ideas and information are the intellectual property of Tsunami. Any copying, retransmission or relay of this document in written or electronic format without the expressed written consent of Tsunami is prohibited. Proceeding to read this document means that the reader consents to keep all information enclosed herein, totally confidential unless otherwise stipulated in writing by Tsunami.

[www.tsunami.com](http://www.tsunami.com)

## Table of Content

<b>Executive Summary .....</b>	<b>2</b>
<b>Overview .....</b>	<b>2</b>
<b>Challenges of Migrating from SharePoint 2003 to MOSS .....</b>	<b>3</b>
Challenge #1. Organizing legacy content is manpower-intensive and time-consuming.....	3
Challenge #2. Maintaining business functions during migration.....	3
Challenge #3. High cost of migration solutions .....	3
Challenge #4. Metadata migration.....	3
Challenge #5. Security.....	3
Challenge #6. Automation of the Migration Process.....	4
Challenge #7. Rolling Back Migration Errors.....	4
Challenge #8. Retaining existing data access views.....	4
<b>Meeting the Challenges: Tsunami Deployer for SharePoint 2003.....</b>	<b>5- 9</b>
<b>Let Tsunami Migration Masters Guide Your Migration to MOSS.....</b>	<b>10</b>
About Tsunami .....	11

## Executive Summary

Microsoft Office SharePoint Server 2007 (MOSS) is being widely adopted by enterprises worldwide, but migrating existing documents and processes from SharePoint 2003 to into the MOSS environment presents businesses with significant challenges. These challenges include maintaining content quality; retaining metadata and security characteristics; mapping content from nonstandard lists, directories and folders to MOSS logical data structures; maintaining business functions during migration; and more.

The Tsunami Deployer for SharePoint 2003 enables in-house IT professionals and system integrators to efficiently, cost-effectively and expertly migrate content and processes from SharePoint 2003 to MOSS. It comprehensively address the challenges involved in migrating content and processes from SharePoint 2003 to MOSS with features such as a powerful Rule Engine that automates the process and thus both substantially shortens the time required to migrate content and increases content migration accuracy. Additional capabilities faithfully preserve metadata, hierarchy ACLs and security models.

As the only solution provider that specializes entirely on migrations solutions, Tsunami offers outstanding service and support. The Tsunami Deployer family of flexible Migration Solutions facilitates migration to Microsoft SharePoint 2007 from a wide range of systems and lowers the total cost of SharePoint ownership.

## Overview

With the successful introduction of Microsoft Office SharePoint Server 2007 (MOSS), many enterprises are facing the challenge of migrating existing content from SharePoint 2003. While MOSS makes it easy to create, manage and deliver new content and information processes, it does not provide a viable migration tool for existing documents and processes.

At best, content migration is a complex, resource-intensive and risky process: Vast numbers of documents, each with crucial associated metadata and security characteristics, must be adapted to new system standards and moved to the new system. The quality of the content must be carefully maintained through the transition. In many cases, migration serves as a catalyst for bringing data structures in line with corporate needs, which in turn adds further complexity to the process.

Information officers, IT managers and project managers all face similar migration-related issues. In this paper, we describe eight of the most common pitfalls and challenges they encounter during the migration process and present the comprehensive and powerful migration solution that streamlines the process by efficiently addressing these issues.

## **Challenges of Migrating from SharePoint 2003 to MOSS**

### **Challenge #1. Organizing legacy content is manpower-intensive and time-consuming**

The clean logical data structures that MOSS enables IT managers to easily create frequently bear little resemblance to the legacy data that is to be migrated. In many cases, existing data is stored in multiple sites, in nonstandard lists, directories and folders. Existing structures may serve the clients' needs poorly, but users have a notoriously hard time describing their often vaguely defined needs in a way that enables IT staff to translate them into site templates, list templates and properties. In addition, the data itself may be outdated or corrupt, requiring cleansing before it can be imported into MOSS.

### **Challenge #2. Maintaining business functions during migration**

Few businesses today can afford to shut their doors and suspend operations while migrating to MOSS. In order to continue producing goods and/or serving their customers, most businesses opt for a phased migration process in which subsystems are migrated independently and proper performance is ascertained following each phase.

### **Challenge #3. High cost of migration solutions**

Many off-the-shelf migration solutions are large scale packages with a wide scope of capabilities that are designed for large and complex migration projects. For smaller enterprises or large businesses whose migration needs are limited to migrating SharePoint 2003 to MOSS, these solutions offer a poor return on investment.

### **Challenge #4. Metadata migration**

The metadata associated with business content, such as creator, creation and modification dates, document classification and approval status, is often essential to an organization. Unfortunately, metadata is often destroyed by the migration process and replaced with meaningless values generated at the time of the move. Many migrations solutions preserve a limited array of metadata variables or require IT managers to create a template of all possible metadata variables. Any variables that are not part of the array or included in the template are simply lost.

### **Challenge #5. Security**

The transition between different security models can be confusing and difficult. MOSS groups and roles differ from those of SharePoint 2003, and site permission inheritance must be handled with care. MOSS' enhanced security capabilities enable formerly complex document library privileges to be simplified and saved, but careful migration is essential in order to maintain previously defined user privileges while also creating and populating new groups.

## Challenge #6. Automation of the Migration Process

Mapping existing sites, lists and folders for MOSS site and list creation and metadata migration can be remarkably complex. Without a simple way to describe the migration logic, the time to migrate can grow exponentially with the amount of content. While wizard-guided migration is, in some cases, an attractive option, the complexity of the logic involved in migrating large amounts of content from SharePoint 2003 to MOSS makes it unsuitable for a wizard-based process. Similarly, a spreadsheet-based approach can rapidly become unmanageable for migration of large amounts of content.

## Challenge #7. Rolling Back Migration Errors

Errors are inevitable in a process that is as complex as migration from SharePoint 2003 to MOSS: A site hierarchy might need to be restructured, there might be a typo in a list name, or a structure might need to be changed due to an organizational change. A migration solution should make it easy to review and correct changes before they are finalized.

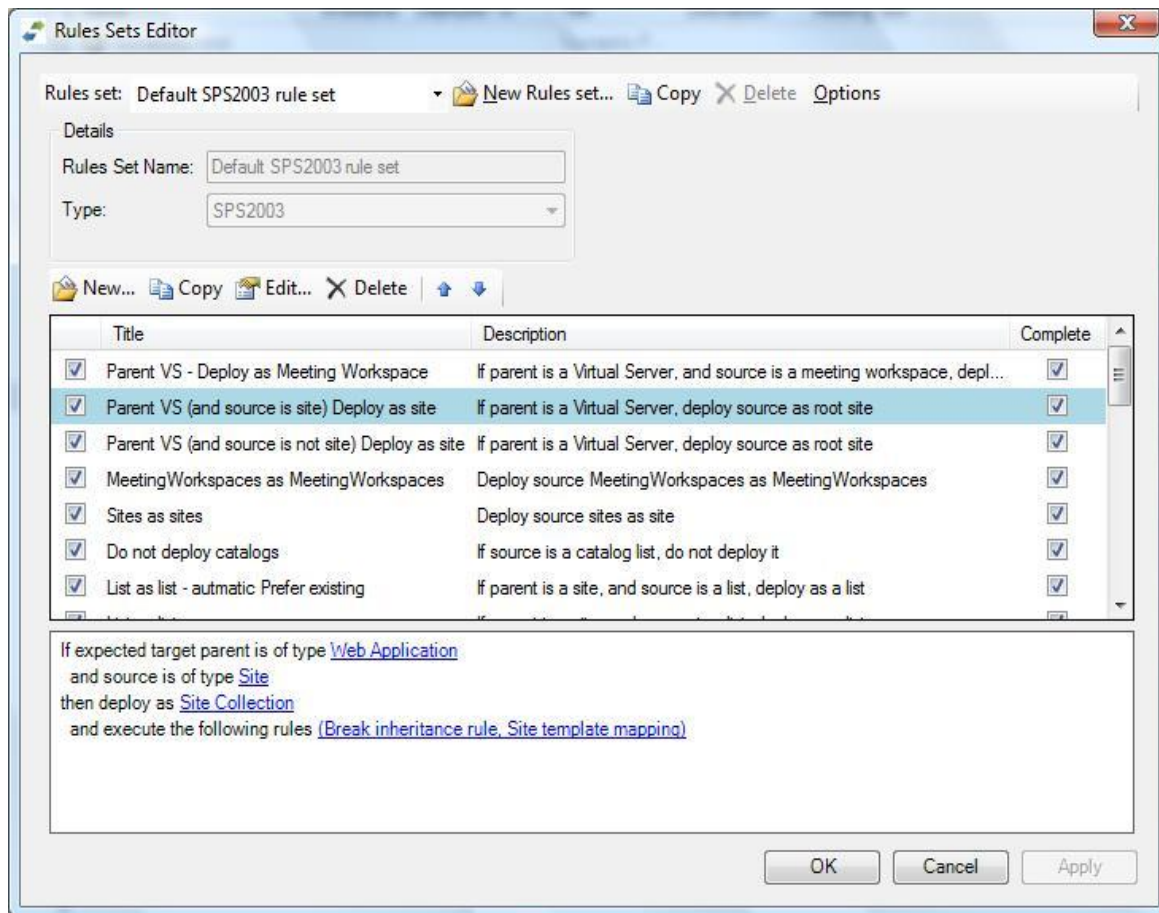
## Challenge #8. Retaining existing data access views

Businesses invest a great deal of effort in ensuring that data can be easily accessed and systems easily used. Often, SharePoint 2003 views that facilitate user access of business data are based on the underlying data taxonomy. When the data taxonomy changes due to migration to MOSS and related updating of legacy content and structures, views are often disrupted as well.

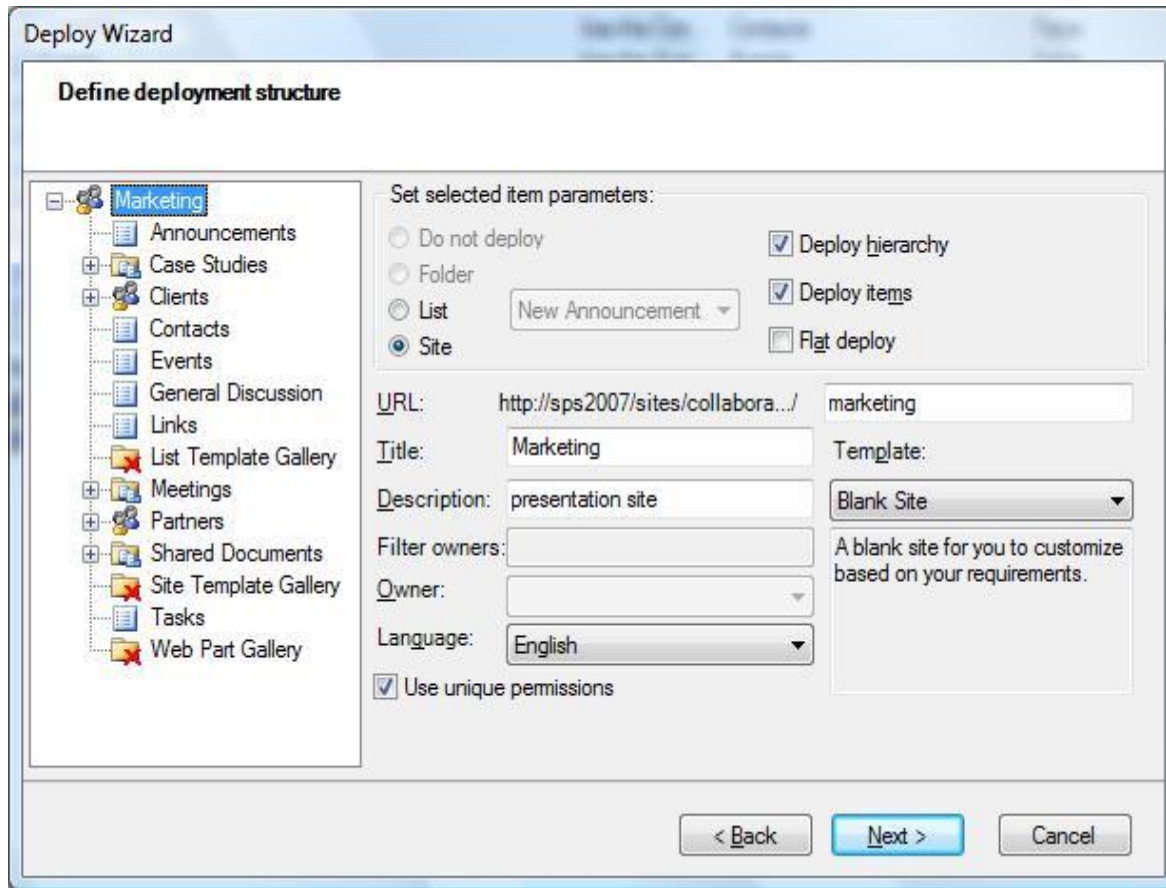
## Meeting the Challenges: Tsunami Deployer for SharePoint 2003

Tsunami, a pioneer in the field of content migration, is a Microsoft Gold Certified provider of SharePoint migration solutions. Based on the company's extensive experience in content migration solutions, its Tsunami Deployer for SharePoint2003 Migration Version 2.3 is a cost-effective solution that enables IT managers to effectively meet the challenges of migration.

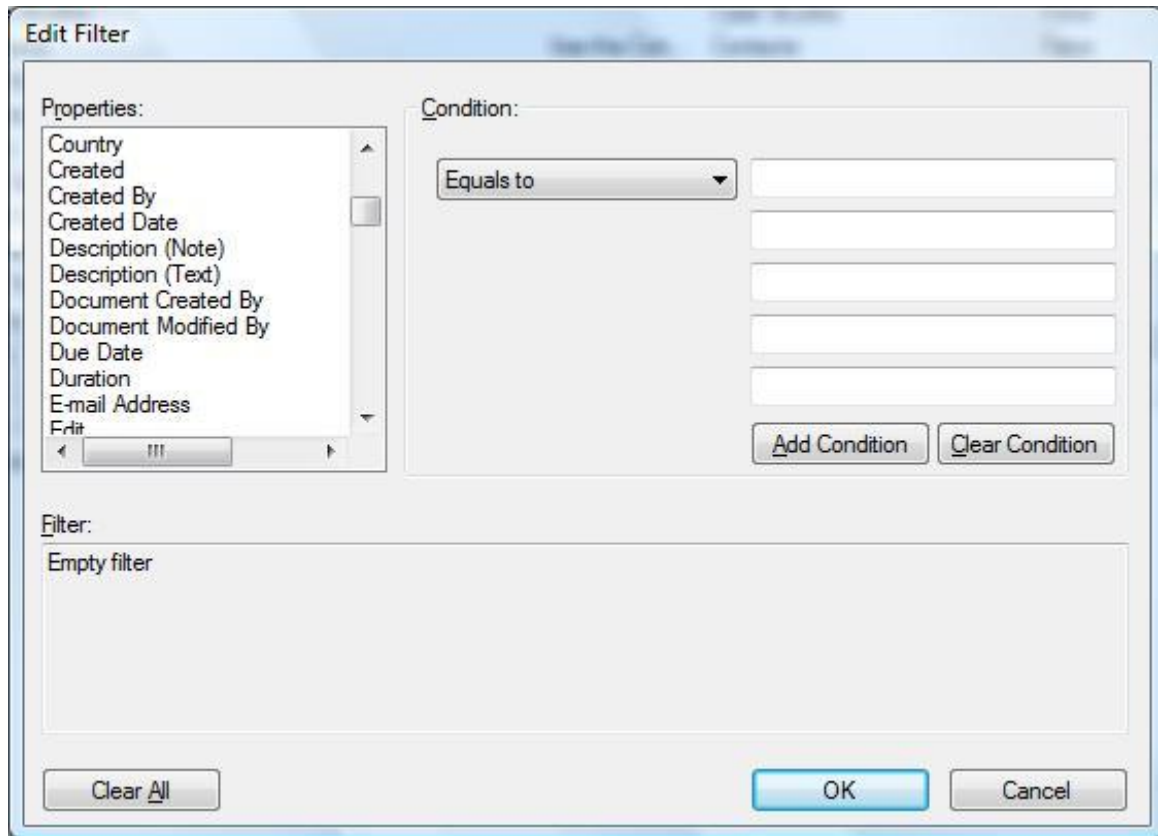
Tsunami Deployer for SharePoint 2003 features a sophisticated yet easy-to-use Rule Engine that significantly reduces the time required to migrate content from SharePoint 2003 to MOSS by automating the process. The Rule Engine enables data to be deployed to multiple locations based on organization needs and filters content based on specific criteria. It facilitates exceptionally accurate content migration at exceptional speeds.



The Rule Engine is particularly effective at identifying and filtering irrelevant legacy data that has accumulated over the course of years, a tedious and time consuming task that is often neglected.

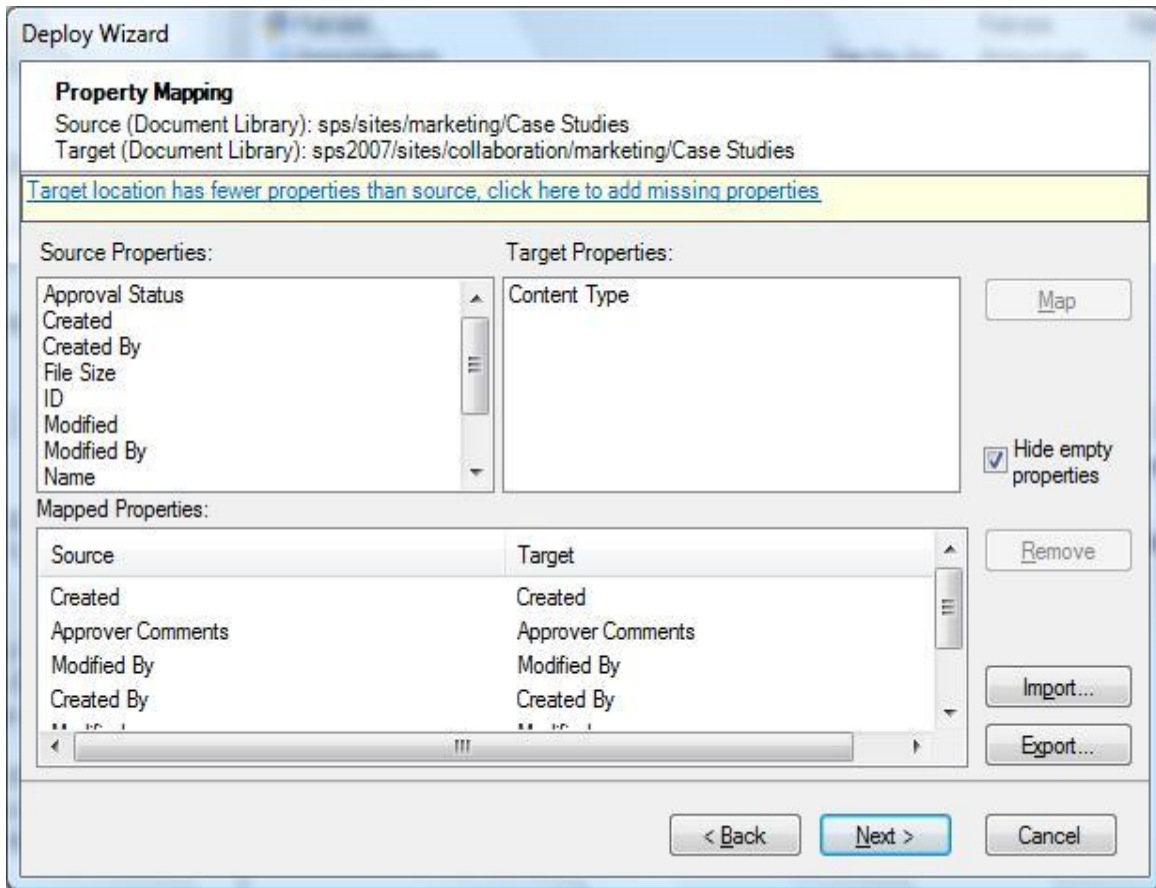


The filtering capabilities of Tsunami Deployer for SharePoint 2003's Rule Engine are especially valuable in phased migration processes. Filtering enables content that is essential for end user activity to be accurately identified and protected during each stage of migration to ensure that end users are not inconvenienced in any way. Similarly, Tsunami Deployer for SharePoint 2003 supports migration of SharePoint 2003, regardless of changes in underlying data structures, to ensure the stability of the user experience.

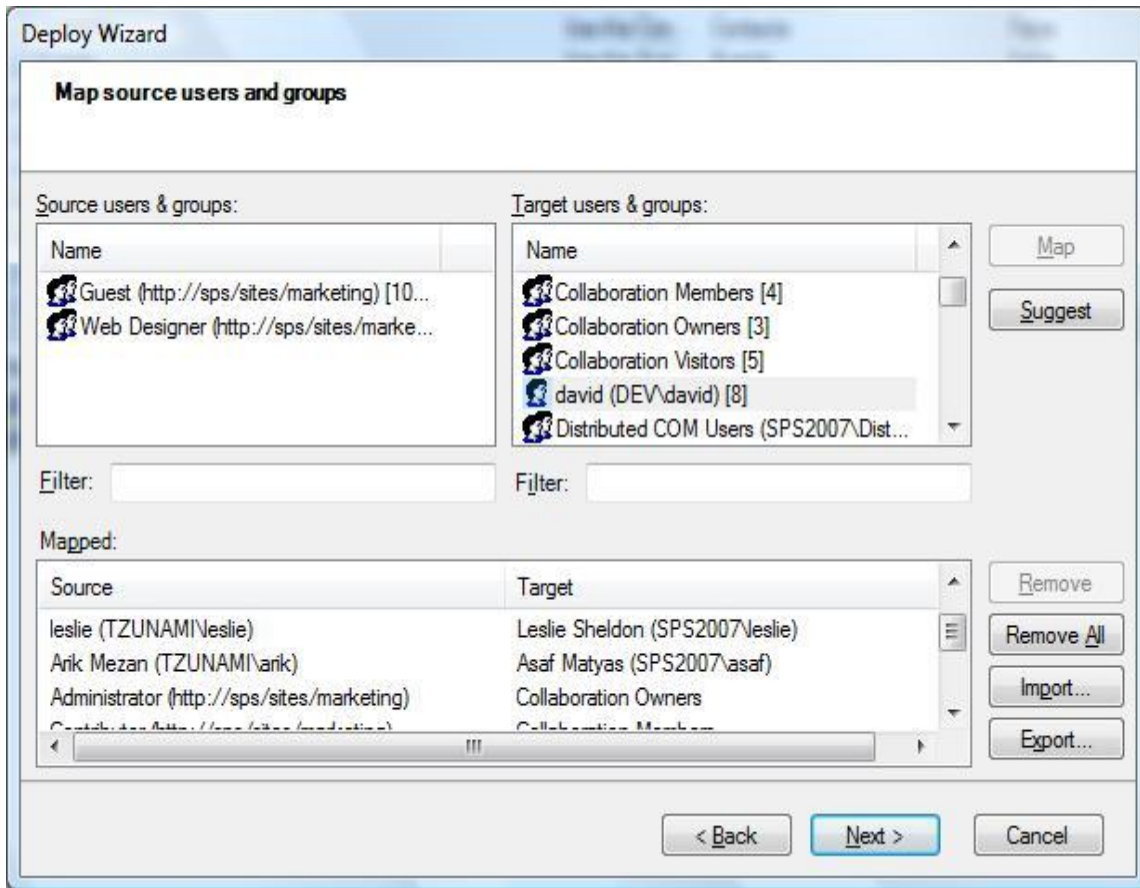


Unlike most off-the-shelf migration solutions, Tzunami Deployer for SharePoint 2003 enables you to purchase a solution for just the specific migration source(s) and destinations that are relevant for your enterprise. As a targeted solution, Tzunami Deployer for SharePoint 2003 is the most affordable and cost-effective migration solution available.

Tzunami Deployer for SharePoint 2003 ensures that the critical metadata associated with an organization's content is preserved faithfully and comprehensively. It supports a large number of column types and provides easy addition of more columns. Through cloning of source properties, Tzunami Deployer supports on-the-fly additions to list templates during the deployment process. Original values for properties of SharePoint 2003 sources, such as *created by* and *modified by* are accurately preserved through direct mapping to matching SharePoint 2007 properties.



Security models are notoriously difficult to manage when migrating content. Tsunami Deployer for SharePoint 2003 allows security management to be handled as part of the migration process or as a separate process. If performed separately, all original user privileges are maintained during migration and new groups can be created and populated as well. During migration, security source groups can be mapped to target groups even if source and target systems reside in different domains.



Hierarchy ACLs can be completely preserved when migrating from SharePoint 2003 to MOSS with the Tsunami Deployer by mapping between the roles (permission levels) of the respective versions. Tsunami Deployer also allows users to create and edit SharePoint 2007 roles that enable enterprises to take advantage of item-level security, a new feature of SharePoint 2007.

## Let Tsunami Migration Masters Guide Your Migration to MOSS

Tsunami is the only solution provider that focuses solely on migration solutions. As the migration experts, Tsunami has the experience and the technology to ensure that our customers' migration process is as quick and seamless as possible.

**Experienced support team.** As the worldwide pioneers in content migration, Tsunami's support team has over seven years of experience dealing with migration issues. They rarely encounter a problem that they have not solved before and have the broad knowledge to quickly understand and resolve any issues that may arise during the migration process.

**Flexible family of migration solutions.** Tsunami's family of Deployer Migration Solutions enables each business to choose only the applications that it needs. Covering migration to Microsoft SharePoint 2007 from a wide range of systems, including file/network shares, EMC Documentation, OpenText LiveLink, Xerox DocuShare and many, many more, Tsunami Deployers share a common GUI and save up to 90% of traditional migration time.

**Outstanding 24/7 customer service.** While migration is *our* business, at Tsunami we understand that *your* business always come first. So when our customers execute migration processes on weekends and in the early morning hours when their customer load is light, we are ready to provide support and answer any questions that arise.

**Satisfied customer base.** Satisfied Tsunami customers range include federal government entities, Fortune 100 companies and well-known multinationals as well as small enterprises with tight budget constraints.

**Professional business partners.** Tsunami has partnered with leading international system integrators in Europe, Asia and the Americas to ensure that all businesses can benefit from Tsunami's streamlined, cost-saving migration solutions.

**Microsoft Gold-certified Partner.**

## About Tzunami

Tzunami Inc. is a leading provider of SharePoint Migration Solutions, offering simple solutions for migrating all of an organization's content from multiple sources to advanced Microsoft SharePoint systems. Tzunami expertly and flexibly delivers simple, fast and effective solutions for all customer migration requirements. As pioneers in the field of content migration, Tzunami has a strong track record of serving global enterprises, including Fortune 100 companies and well-known multinationals.

